



Using satellite surveillance to support compliance and enforcement

Blue Belt Programme



Marine
Management
Organisation



Centre for Environment
Fisheries & Aquaculture
Science

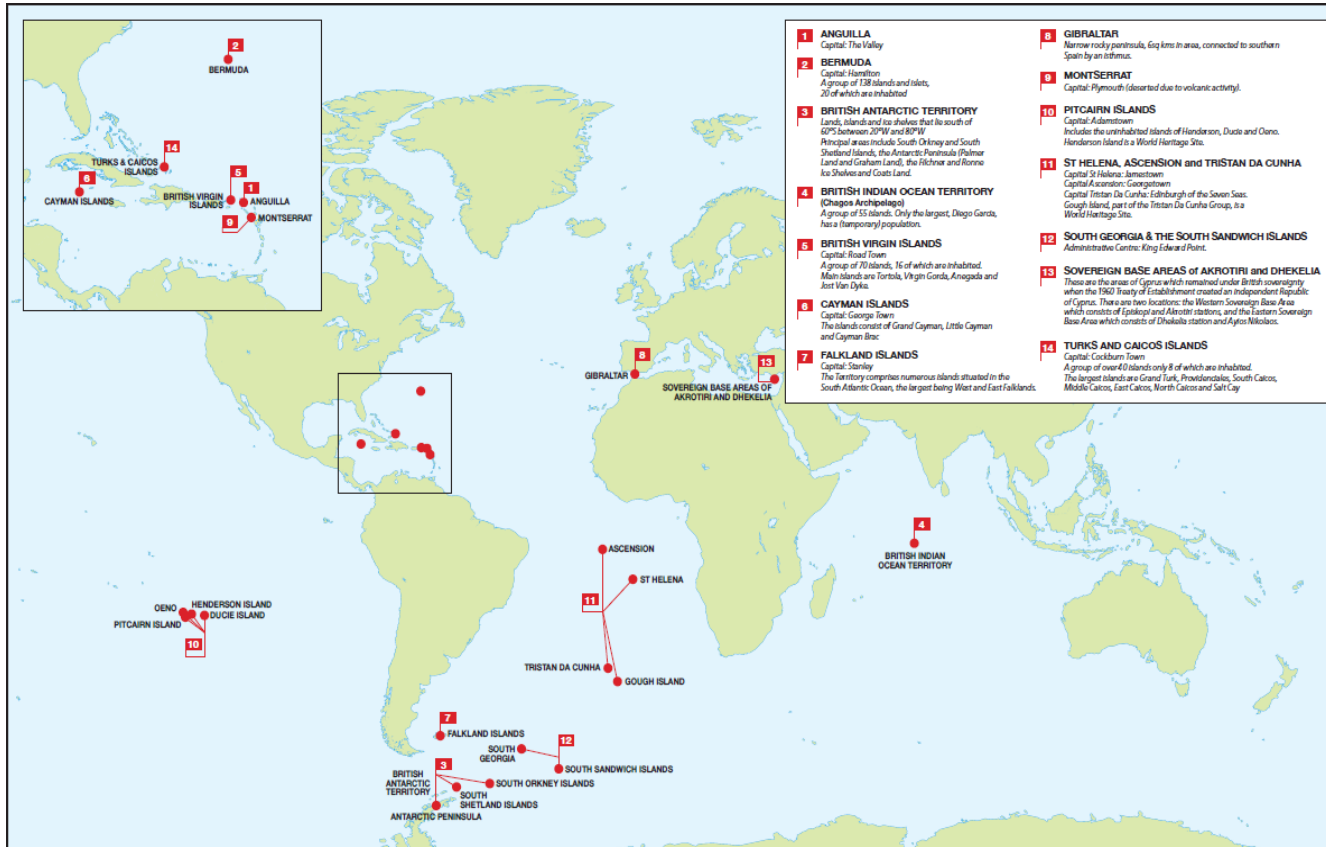


UK Government

Introduction

- The Blue Belt Programme
- Threats – what is IUU?
- Challenges of working in the OTs
- Solutions
 - AIS
 - Satellite Surveillance
 - Challenges and solutions
- Legacy

The Blue Belt Programme



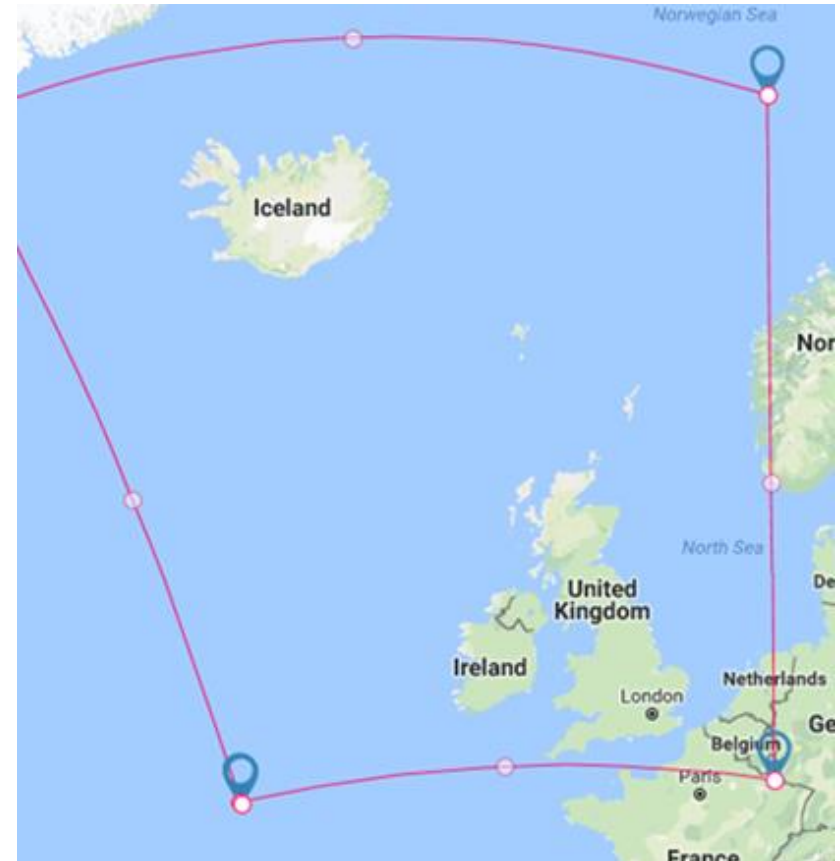
Illegal, Unregulated and Unreported Fishing

- Estimated to cost upwards of \$23 billion (US) each year
- Serious threat to sustainable fishing
- Damages the environment
- Effects socio-economic conditions

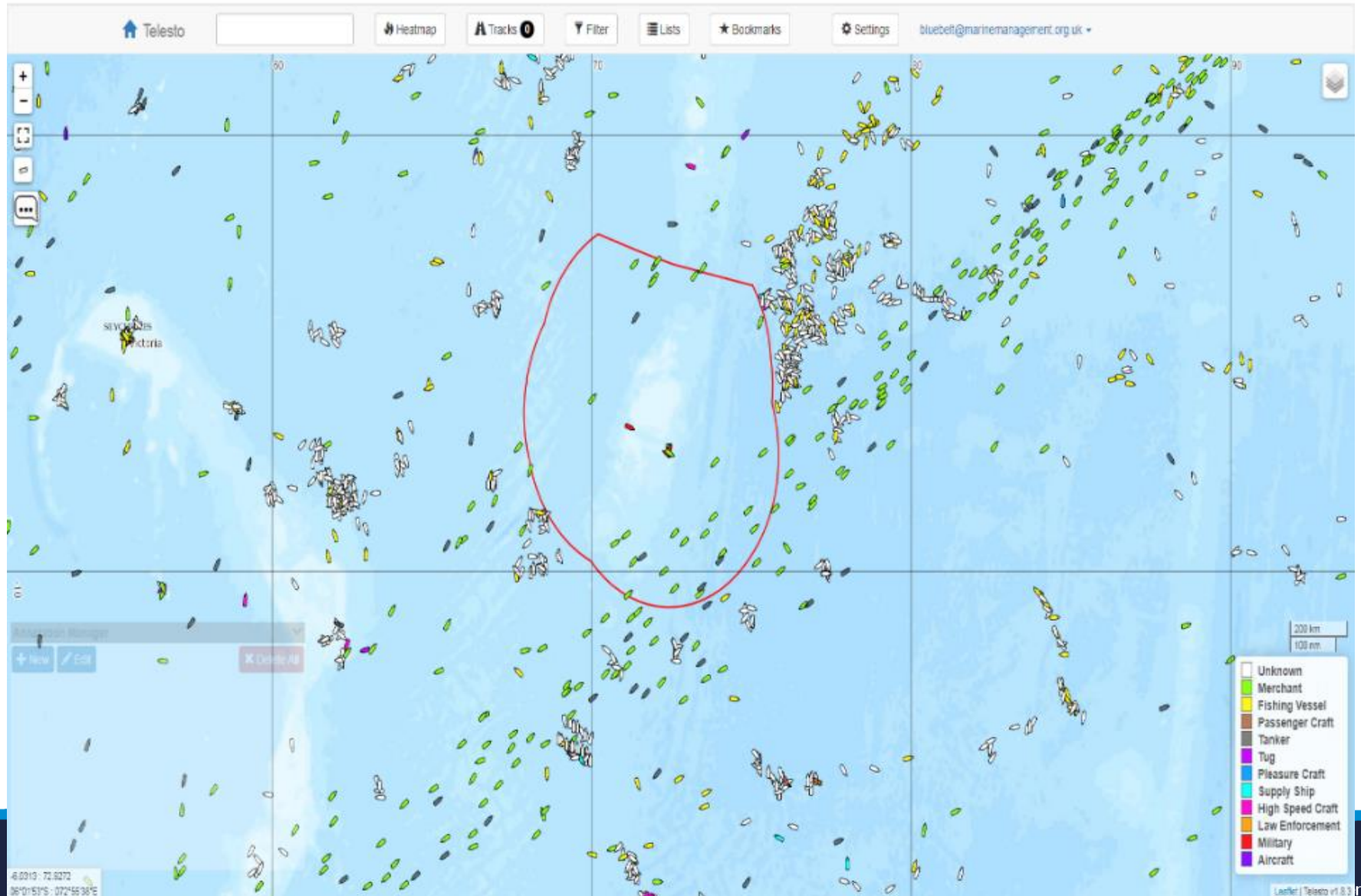


Challenges

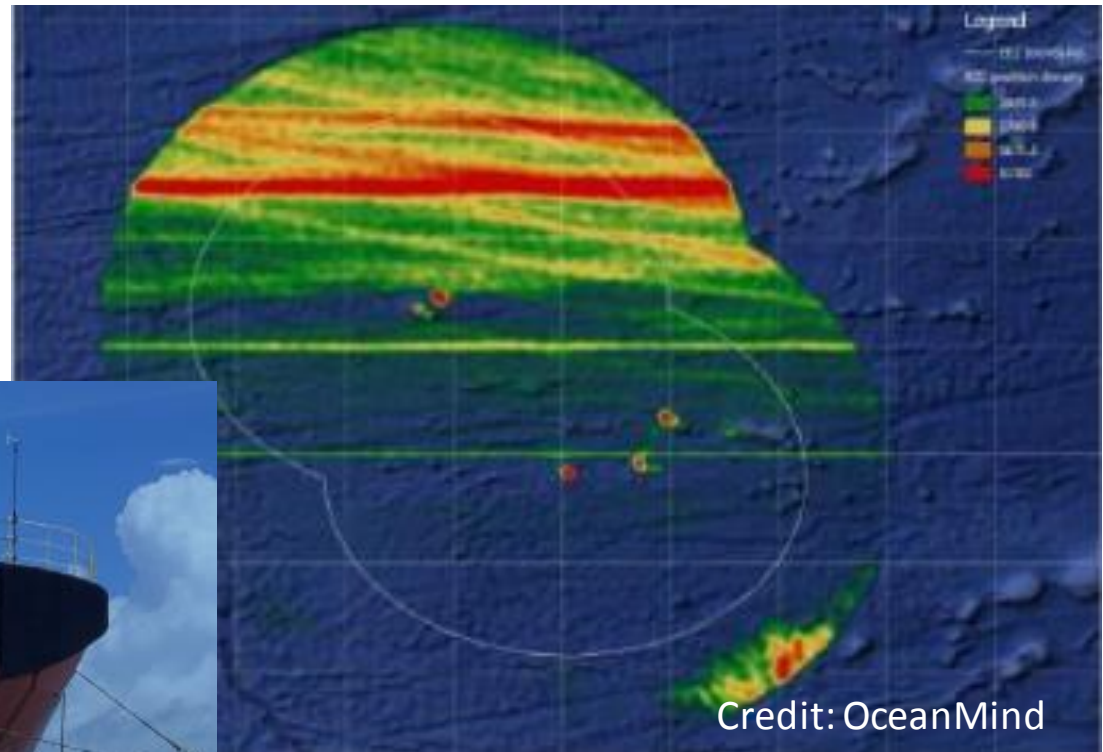
- Spatial scales
- Remoteness
- Resources/ assets
- Infrastructure
- Environment
- Dynamic threats/ fleet control



Automatic Identification System (AIS)

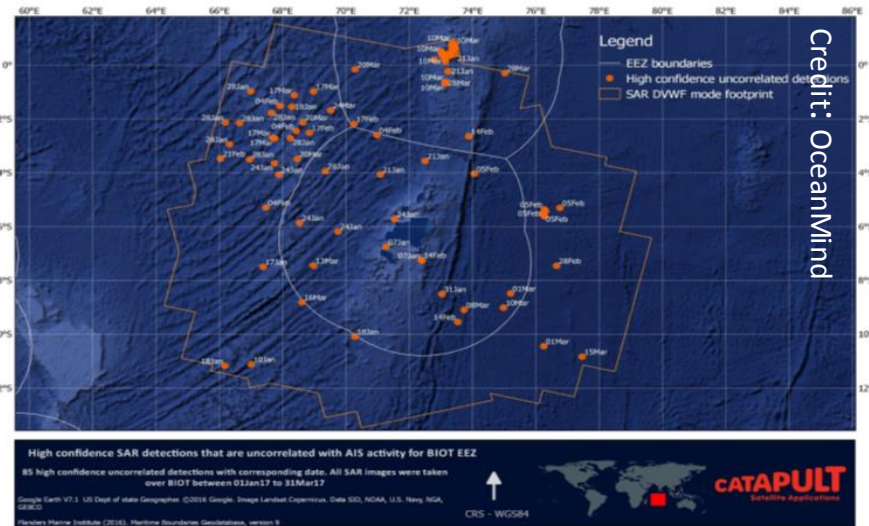


Risk based. Intelligence Led

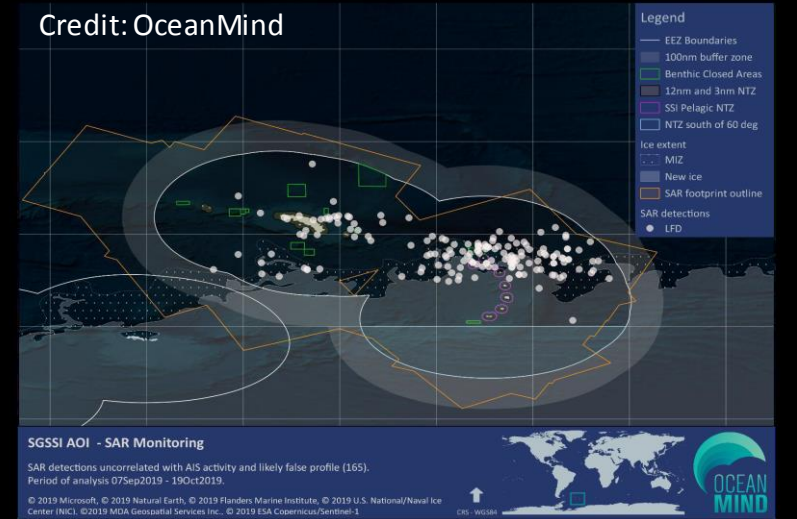


Satellite Surveillance

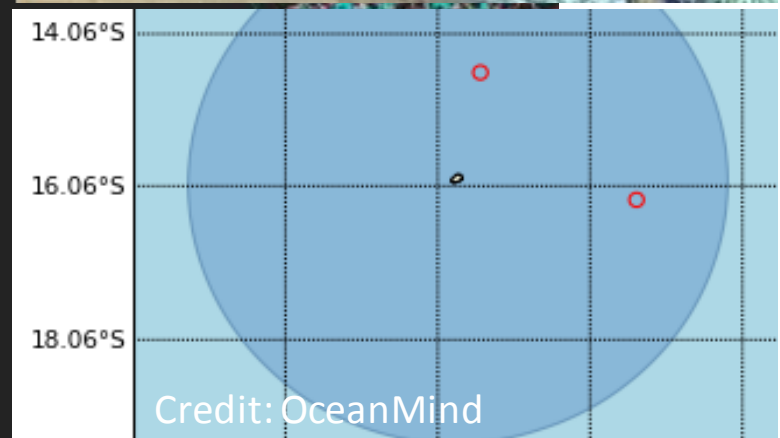
Credit: OceanMind



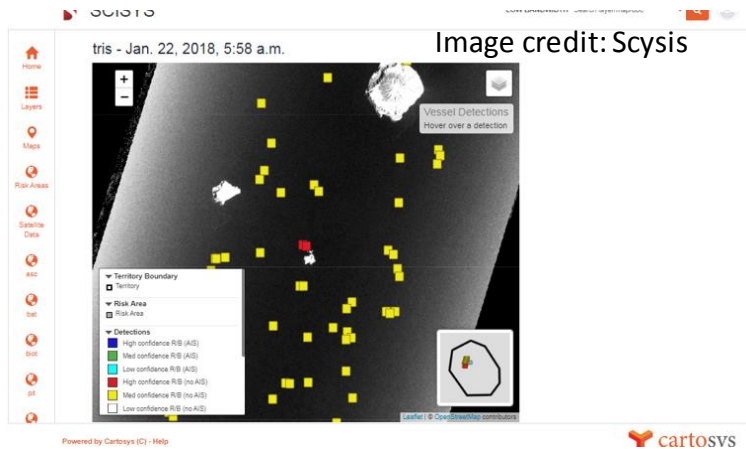
Credit: OceanMind



Satellite surveillance – corroborating intelligence



Other Technology



Blue Belt Surveillance
and Intelligence Hub
(BBSIH)



National Maritime
Information Centre



Marine
Management
Organisation



Leaving a Legacy

- Centralised hub
- Low cost, long term
- Autonomy
- Cost
- Managing data
- Road mapping
- Training

