



Placing nature at the heart  
of sustainable wealth  
and wellbeing

# ANNUAL REVIEW 2018-2019

[jncc.gov.uk](http://jncc.gov.uk)



# FROM OUR CHIEF EXECUTIVE

Throughout 2018/19 our teams delivered an extensive programme of work in the UK and internationally in support of the environmental priorities of the UK Government and devolved administrations. Key components of our work included providing evidence on the status of the natural environment, assessing the impact of human activities, and delivering advice to inform policy development and management interventions.

Our success during the year was down to the dedication of our people, who have deep expertise in environmental science and policy, data analysis and business support. We also acknowledge our fruitful partnerships with many organisations in the public sector, third sector and business.

Looking forward, we will continue to take a flexible approach and will adapt to the evolving requirements of the four governments of the UK and other customers.

This review summarises what we achieved in 2018/19.

**Marcus Yeo**

*"Our success would not have been possible without the contributions made by our many partner organisations in the public, private and voluntary sectors."*





# HIGHLIGHTS OF THE YEAR INCLUDED...

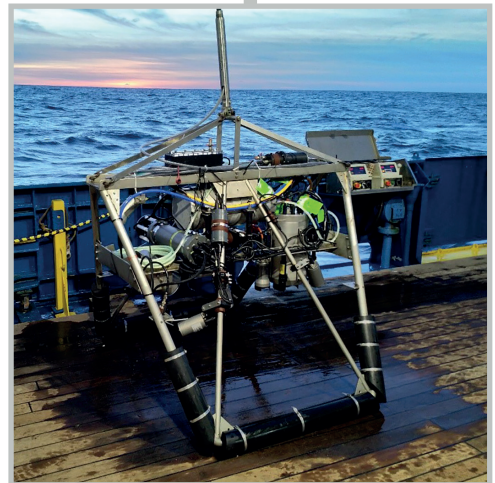


## SPECIES SURVEILLANCE

We worked with partner organisations to co-ordinate long-term species surveillance schemes in which data are captured by volunteer recorders. The schemes provided updated population trends for a wide range of terrestrial species in the UK (birds, butterflies, bats, plants) and are a key source of evidence for detecting change in the natural environment.

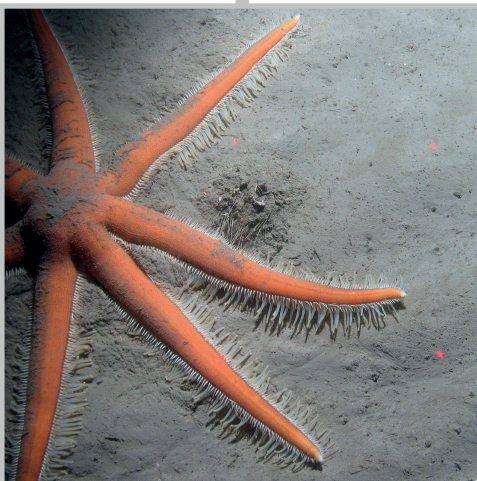
## MONITORING BIODIVERSITY MONITORING

We undertook four surveys with Cefas, Marine Scotland and the National Oceanography Centre to acquire monitoring data for offshore marine protected areas. We also made significant progress in developing an integrated marine biodiversity monitoring programme for the UK by obtaining endorsement of options from the Marine Science Coordination Committee.



## UK BIODIVERSITY INDICATORS

We published an annual update of the UK biodiversity indicators, including assessments of 24 indicators and 50 component measures. The indicators show trends over time and are used for international reporting.



## MARINE PROTECTED AREAS

In support of national and international obligations, we provided scientific advice to enable governments to complete a network of marine protected areas in UK waters. We delivered post-consultation advice on Tranche 3 Marine Conservation Zones (MCZs) in England and pre-consultation advice on Deep Sea Reserves in Scotland. In Wales we worked in partnership with Natural Resources Wales and Welsh Government to identify options for MCZs.

## OFFSHORE INDUSTRY ADVICE

Our experts advised public authorities on the regulation of offshore industry activities, including 579 oil and gas applications and 22 aggregate dredging applications. We also provided scientific advice to the country nature conservation bodies on offshore renewables casework.

Beyond the UK, we started to work with the Foreign and Commonwealth Office on the development of regulations, standards and guidelines for deep-sea mining in areas beyond national jurisdiction.





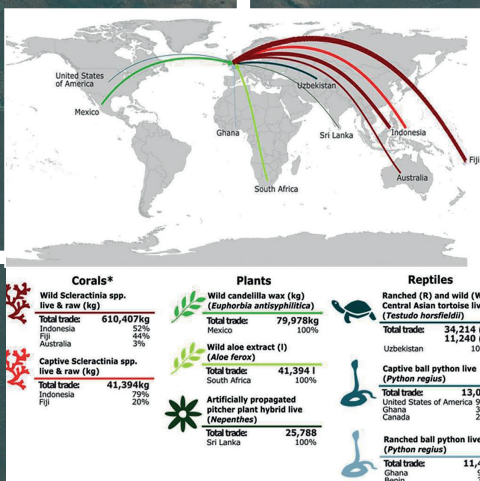


## CONVENTION ON BIOLOGICAL DIVERSITY REPORTING

We published the UK's 6th national report under the Convention on Biological Diversity (CBD) which summarised the UK's progress in achieving the 20 Aichi biodiversity targets for the period 2011-2020. Looking to the future, we worked with governments and other partners to generate ideas for a post-2020 global biodiversity framework. In November 2018, our people participated in the UK delegation to the CBD's 14th Conference of the Parties.

## VALUING THE NATURAL ENVIRONMENT

We are increasingly embedding a natural capital approach in our work, highlighting the value of natural resources and the social and economic benefits they provide. In 2018/19, we undertook projects in several of the UK's Overseas Territories and countries in South America to inform sustainable management of natural resources. The core of the work involved mapping stocks of natural capital and flows of ecosystem services using remote sensing and data modelling.



## EU EXIT PREPARATION

In preparation for the UK's departure from the EU, we systematically assessed all of our functions to ensure seamless delivery from day 1. A particular area of attention was scientific advice on licence applications under the Convention on International Trade in Endangered Species, where the volume of applications is predicted to increase substantially following UK exit.



# PARTNERSHIPS

Much of our work is dependent on collaborative working, bringing together the skills and ambitions of a wide range of stakeholders. We have many strong partnerships with government agencies and departments, academia and civil society.

In the UK we work with many organisations, and through them with thousands of volunteers, to deliver surveillance schemes. They provide essential information on biodiversity status and trends. We also work with others to get the most from investments in research, for example by enabling data held by a range of organisations to be available to all and developing strategies for collaborative research.

## Highlights of the year:

- ◆ Working closely with the UK's nature conservation bodies - Natural Resources Wales, Northern Ireland Environment Agency, Natural England and Scottish Natural Heritage. We share information and develop shared solutions to meet the needs of each country.
- ◆ Maintaining and strengthening our partnerships with non-governmental organisations and utilising their volunteer networks to undertake surveillance of terrestrial biology.
- ◆ Participating in collaborative funding bids resulting in several funding successes for UK and international projects.

# WORKING WITH US

We're keen to participate collaboratively as a project partner or a co-ordinator. We're interested in everything from simple partnerships to multidisciplinary projects or networks of scientists and researchers across all science and technology fields related to the environment.





## HOW WE WORK

The broad range of work that we undertake in both the UK and internationally requires careful planning. Our work is guided by our strategy and the priorities of the UK Government and devolved administrations.

Each year we set out our priorities and work programmes for the next year in a detailed business plan. This is based on agreed Government funding and anticipated external income. Our plans are subject to the approval of Ministers in the Department for Environment, Food and Rural Affairs (Defra), the Scottish Government, the Welsh Government and the Department of Agriculture, Environment and Rural Affairs in Northern Ireland.

## OUR PEOPLE

We employ approximately 190 scientific, technical and support staff based primarily in offices in Peterborough and Aberdeen, with outposted staff in other parts of the UK including Wales, Northern Ireland and the Falkland Islands.

One of our great strengths is the deep and extensive expertise of our teams – several of our people are national and international experts in their fields. As an organisation we support discussion, mutual learning and professional development.

We are a socially responsible organisation, providing flexibility that enables our staff to combine work with family responsibilities and to contribute to the communities they live in. We work to a set of core values that underpin everything we do.





# DELIVERING OUR STRATEGY

JNCC has five high-level strategic outcomes that are guiding our work until 2020. This strategy is enabling us to maintain our success into the future by responding to opportunities and challenges.



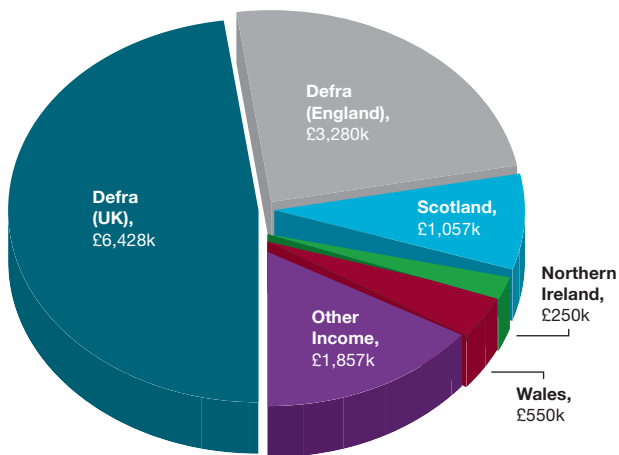


# FINANCIAL SUMMARY

## TOTAL INCOME AND EXPENDITURE 2018/19

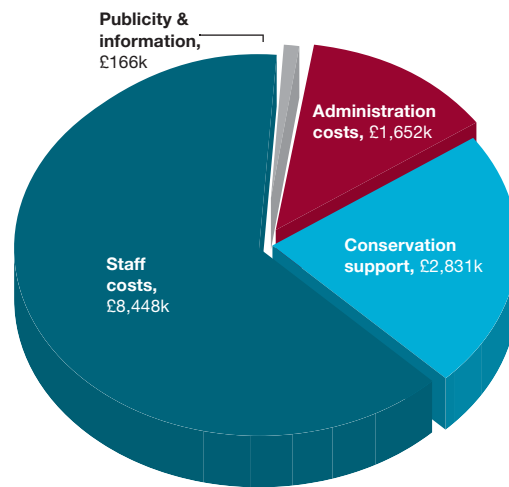
The majority of our funding is provided by the Department for Environment, Food and Rural Affairs (Defra), the Scottish Government, the Welsh Government and the Department of Agriculture, Environment and Rural Affairs (Northern Ireland).

### JNCC – WHERE OUR MONEY COMES FROM



**Total income** £13,422k

### JNCC – TYPES OF EXPENDITURE 2018/19



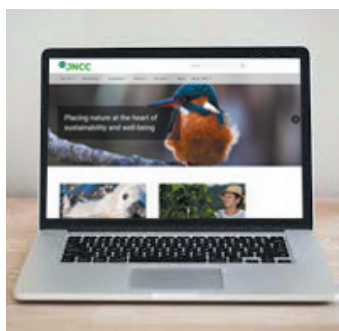
**Total expenditure** £13,097k





# OUR COMMUNICATIONS

Use your smartphone  
to scan this code



Our website is the main portal for all news and information about our work – [jncc.gov.uk](http://jncc.gov.uk)

Here you can access a range of data sources and products including maps and site details, for both marine and terrestrial environments.

We regularly publish reports arising from our scientific work and a range of topics under the title **JNCC reports (ISSN 0963-8091)**. Our reports are free to download from our website.



Connect with us:

@JNCC\_UK [www.facebook.com/JNCCUK](https://www.facebook.com/JNCCUK)  
 [www.linkedin.com/company/JNCC](https://www.linkedin.com/company/JNCC) JNCC-YouTube



## JNCC Nature News

Nature News is published four times a year and keeps you informed of our UK and international conservation work.

## JNCC Bulletin

Our monthly bulletin highlights some of our recent projects and activities, both in the UK and internationally – all wrapped up in a short at-a-glance format that can be read on the go.

Both JNCC Nature News and the JNCC Bulletin are shared through our social media channels. Alternatively, you can subscribe by emailing: [communications@jncc.gov.uk](mailto:communications@jncc.gov.uk)

## Peterborough and registered office

JNCC  
Monkstone House  
City Road  
Peterborough, PE1 1JY  
Tel: +44 (0) 1733 562626  
Email: [comment@jncc.gov.uk](mailto:comment@jncc.gov.uk)

## Aberdeen office

JNCC  
Inverdee House  
Baxter Street  
Aberdeen  
AB11 9QA  
Tel: +44 (0) 1224 266564

ISBN 978-1-86107-632-8

## Enquiries

If you would like information on any aspect of our work, please email: [comment@jncc.gov.uk](mailto:comment@jncc.gov.uk)



## PHOTO CREDITS:

### Front Cover

Starfish, East of Haig Fras © JNCC  
Sanderlings © Pixaby royalty free  
Grand Turk © DigitalGlobe  
Greater knapweed © James Williams  
Seabird survey © JNCC  
Common spotted-orchid © Eleonora Manca

### Page 2

Silver-washed fritillary © Natural England/Allan Drewitt

### Page 3

Avocet © Natural England/Allan Drewitt  
Cefas Underwater Camera System © JNCC/Cefas

### Page 4

Cover image © JNCC  
Starfish, East of Haig Fras © JNCC/Cefas  
Offshore platform © Alex Brown

### Page 5

JNCC staff at CoP14 © JNCC  
Bahia Lomas Ramsar Site in Chile © DigitalGlobe  
CITES infographic © CITES Trade Database, UNEP\_WCMC

### Page 6

Willow warbler © BTO E Fellowes  
Little grebe © BTO Liz Cutting

NPMS training © Louise Marsh BSBI

### Page 7

Chile viticulture project © JNCC  
Hamon grab team © JNCC  
Gwawr Falklands © Neil Golding

### Page 8

JNCC Strategy Wheel © JNCC  
2019 VSAS seabird training © JNCC  
Greater knapweed © James Williams

### Page 9

White-tailed bee © Wendy Dalton  
Cold water coral © Keith Hiscock

### Page 10

Spring or Autumn cover © JNCC  
August © JNCC

### Page 11

Common spotted-orchid © Eleonora Manca  
Drop Camera Team © JNCC

### Page 12

Sanderlings  
Hamon grab © Helen Last







## OUR WORK IN 2019/20

Priorities for 2019/20 have been determined in consultation with Defra and the devolved administrations. JNCC supports the integration of ecosystem services into decisions to enable more sustainable use of natural resources across both land and sea within the UK and internationally. The approach requires extensive use of data and scientific evidence but also developing the capabilities of others to enable more rapid scaling and adoption of the approaches.

- ◆ **Monitoring.** Monitoring provides insight into the status of the natural environment, how it is changing and why. This information can be used to help direct policies and management interventions, as well as to assess their effectiveness.
- ◆ **Evaluating options.** Almost every human activity impacts the environment in some way. Often, many different activities may be simultaneously having an impact, and it is therefore important to determine what these impacts are, and which activities are having the greatest effect.
- ◆ **Advice.** Good policy-making, planning, development and risk management all depend on good advice, based on reliable and up-to-date evidence on biodiversity status and trends. The evidence needs to be balanced with an understanding of the costs and potential benefits of the various interventions. Our sound understanding of the natural environment, and knowledge of the relevant evidence sources, means that we are well-equipped to produce evidence, information and advice.