



**JNCC Report
No. 713B**

**Mapping the flow of data from monitoring programmes into
UK Marine Strategy indicators for cetaceans
Annex: Dataflow diagrams**

Sophie Rush¹, Yessica Griffiths¹, Karen Webb¹, Eleonora Manca¹

August 2022

© JNCC, Peterborough 2022

ISSN 0963 8091

JNCC's report series serves as a record of the work undertaken or commissioned by JNCC. The series also helps us to share, and promote the use of, our work and to develop future collaborations.

For further information on JNCC's report series please contact:

Joint Nature Conservation Committee
Monkstone House
City Road
Peterborough PE1 1JY

<https://jncc.gov.uk/>

Communications@jncc.gov.uk



Department for Environment Food & Rural Affairs

This report was produced by JNCC through a Defra-funded project.

This report should be cited as:

Rush, S., Griffiths, Y., Webb, K. & Manca, E. 2022. Mapping the flow of data from monitoring programmes into UK Marine Strategy indicators for cetaceans. Annex: Dataflow diagrams. *JNCC Report No. 713B*, JNCC, Peterborough, ISSN 0963-8091.

<https://hub.jncc.gov.uk/assets/ab9ac299-1e06-4150-8d2b-2e23251bcaa5>

Author affiliations:

¹ JNCC, Monkstone House, City Road, Peterborough, PE1 1JY

Acknowledgments:

The authors would like to thank the Representatives of the Biodiversity Data and Information Group (BioDIG), an expert group of the UK Marine Monitoring and Assessment Strategy (UKMMAS) Healthy & Biologically Diverse Seas Evidence Group (HBDSEG), for providing expert technical input and review of the data flow diagrams and technical notes.

The authors would also like to thank the Inter-Agency Marine Mammal Working Group (IAMMWG) for providing expert technical input and review of the data flow diagrams and technical notes.

Evidence Quality Assurance:

This report is compliant with JNCC's Evidence Quality Assurance Policy

<https://jncc.gov.uk/about-jncc/corporate-information/evidence-quality-assurance/>

The views and recommendations presented in this report do not necessarily reflect the views and policies of JNCC.

Summary

Under the UK Marine Strategy (UK MS) the UK is required to determine and measure the status of the health of its seas. For this, specific indicators are used for different ecosystem components to measure and assess progress. Data used for the calculation of cetacean indicator assessments originate from a series of discrete monitoring programmes carried out by a number of organisations, none of which were specifically set-up to fulfil the requirements of the UK MS assessments. The data landscape underpinning the UK MS indicator assessments is therefore complex and the risk of duplication of effort and underutilisation of data resources great. This piece of work aims to follow and depict the flow of data from monitoring programmes to the indicator assessments, with the goal of highlighting areas where the flow of data could be streamlined, improved or, in the case of missing data links, created. We have outlined issues that could impact the efficiency and quality of the indicator assessments and made recommendations on how to address them.

This Annex (JNCC Report No. 713B) includes the dataflow diagrams for each of the cetacean UK MS indicators. Supporting technical notes describing these dataflow diagrams are provided in the main report (JNCC Report No. 713A).

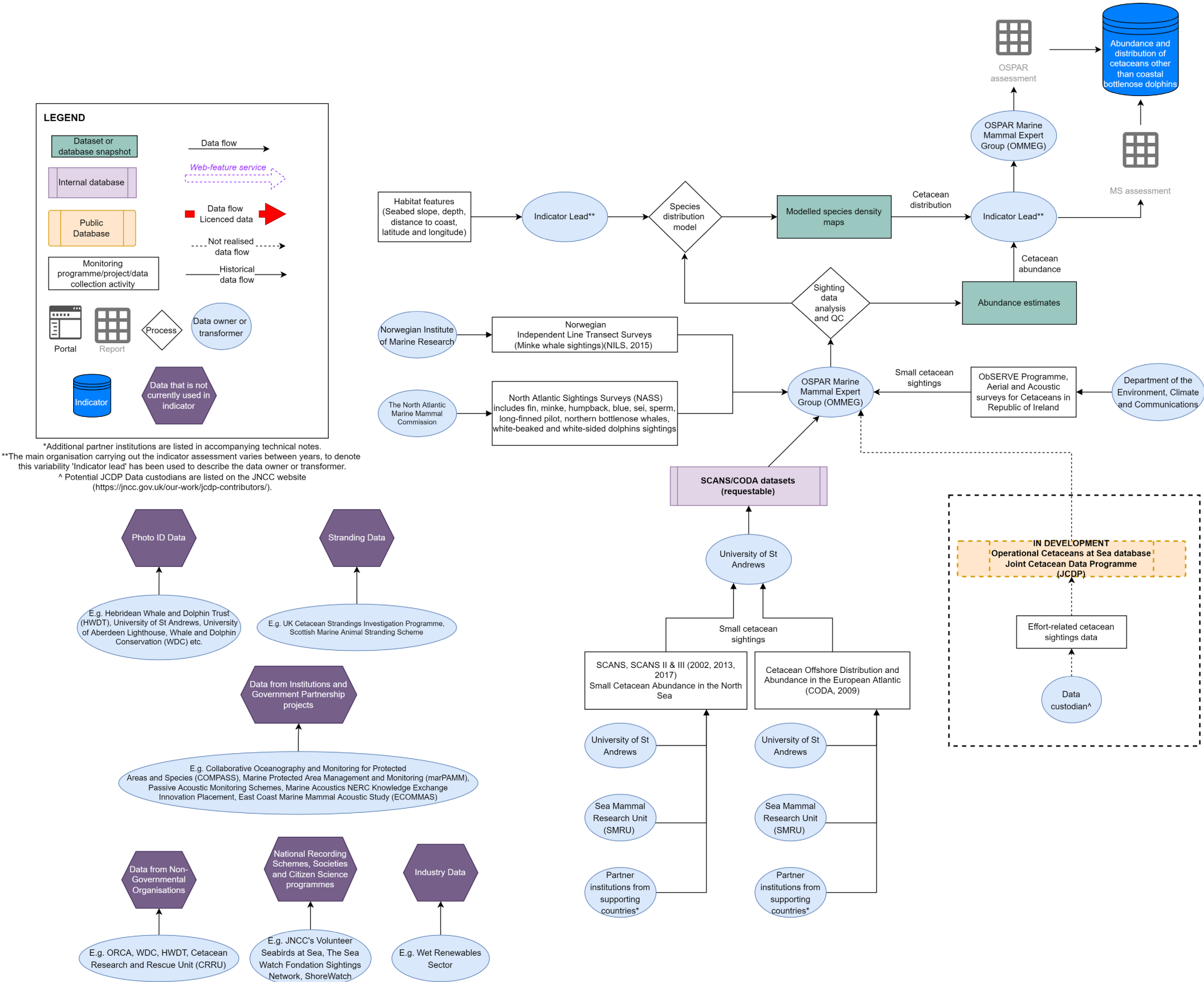
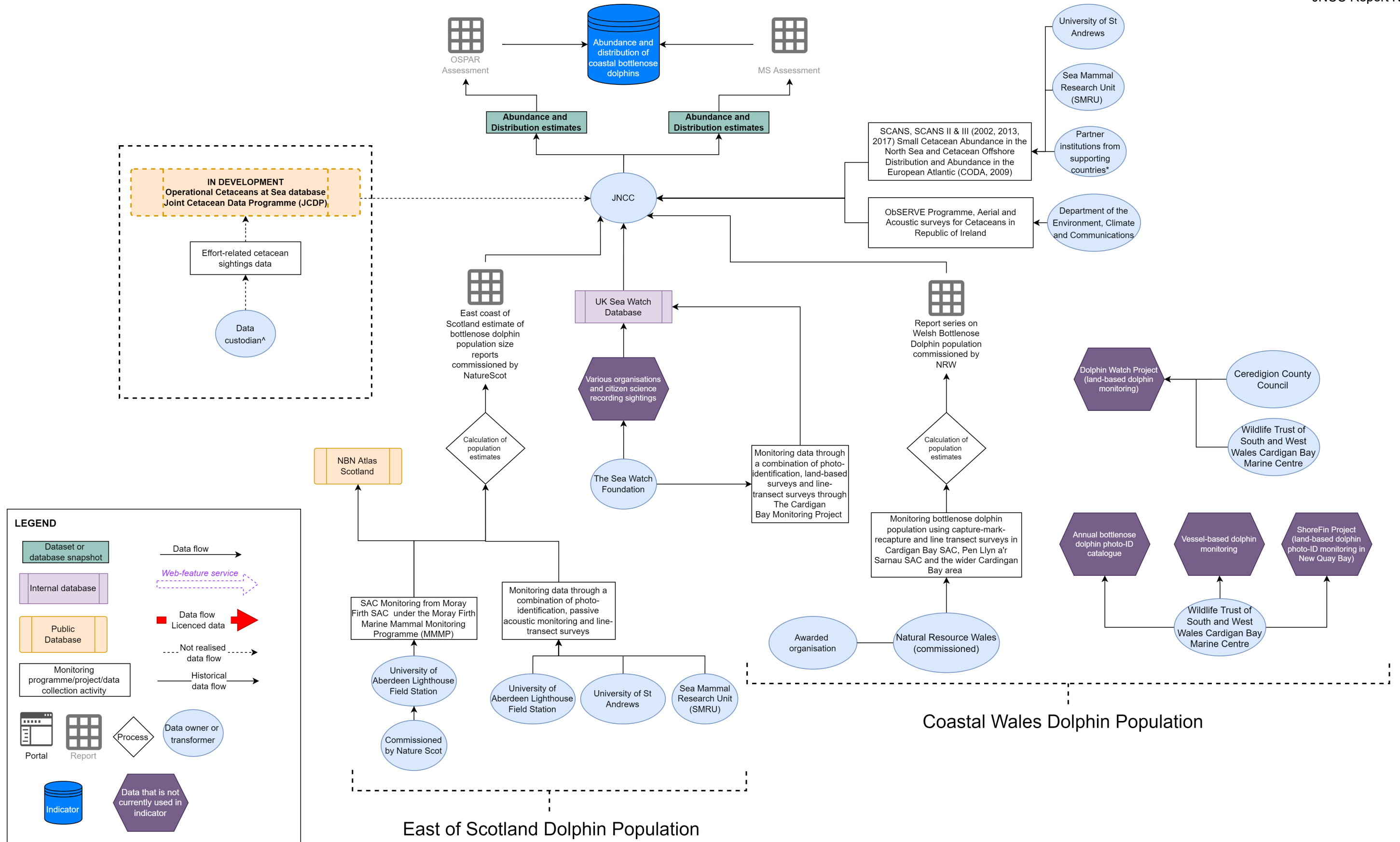


Figure 1. Diagram depicting the flow of data for the indicator ‘Abundance and distribution of cetaceans other than coastal bottlenose dolphins’.



^Potential JCDDP Data custodians are listed on the JNCC website (<https://jncc.gov.uk/our-work/jcddp-contributors/>).

Figure 2. Diagram depicting the flow of data for the indicator 'Abundance and distribution of coastal bottlenose dolphins'.

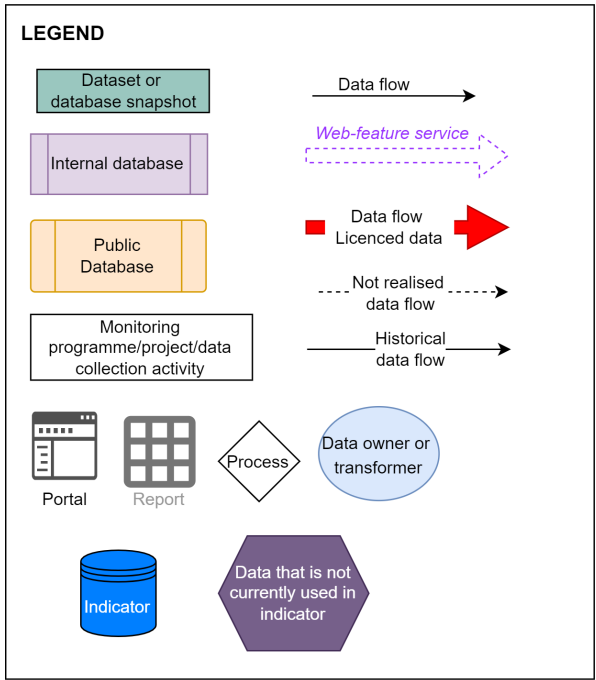


Figure 3. Diagram depicting the flow of data for the indicator ‘Harbour porpoise bycatch’ which is to be renamed ‘Marine mammal bycatch’.