

Amendment to the boundary of Haig Fras Site of Community Importance (SCI)

Background to site

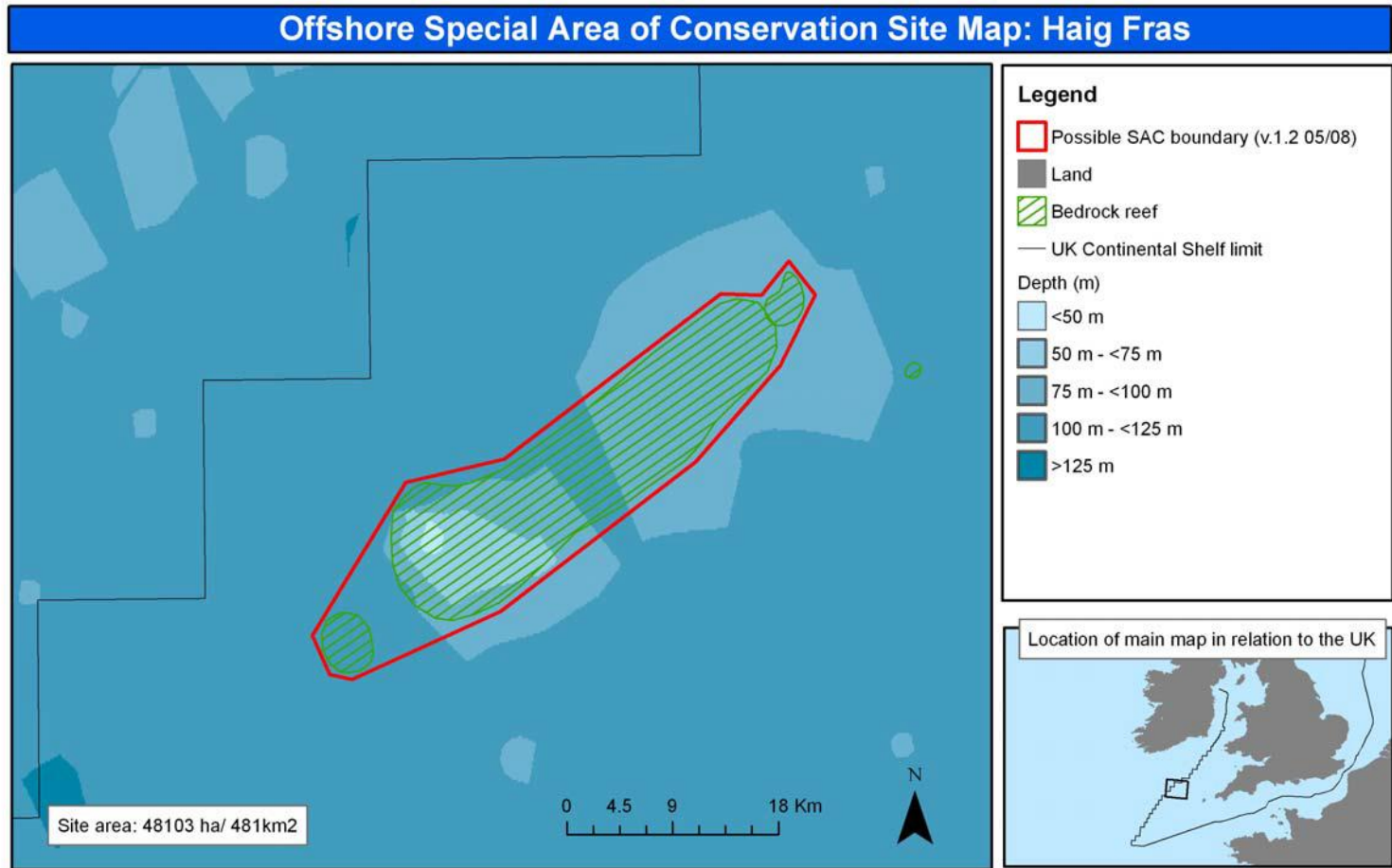
The UK submitted the Haig Fras candidate SAC to the European Commission (EC) in 2008 for the protection of Annex I habitat 'Reef'; the EC confirmed the site as a Site of Community Importance (SCI) in 2009. The original boundary (Figure 1) has recently been amended to reflect our improved knowledge of the site.

Reasons for boundary amendment

JNCC reviewed data collected since 2008 and concluded that the original boundary was no longer appropriate since the information shows the reef feature extends outside the SCI. Data collected from commercial fishing vessels (Olex bathymetry data) indicated reef habitat extended south of the existing site boundary. JNCC arranged for further survey work of the area, in 2011 and 2012, to get additional information for the Haig Fras SCI itself, together with data outside of the site boundary (Barrio Froján *et al.*, 2015, Figure 2). These data show the reef feature extending outside of the original SCI boundary to the south. JNCC concluded that the boundary of the current SCI should be amended to reflect the evidence on the presence and extent of the Annex I reef feature.

JNCC constructed a revised site boundary for the SCI to enclose the minimum area necessary to ensure protection of the reef feature, closely following the known extent of the habitat feature (Figure 3). The approach took full note of JNCC's marine SAC boundary definition guidelines (JNCC, 2012). The proposed change in site boundary prompted a review of the conservation objective for the Annex I reef feature, taking into account recent data on human activities. JNCC concluded the conservation objective should remain as 'Restore to Favourable Condition'.

Figure 1: Original boundary of Haig Fras cSAC



Boundary coordinates:

- 1) 50°25'3", -7°29'49"
- 2) 50°23'29", -7°27'58"
- 3) 50°20'16", -7°30'36"
- 4) 50°15'57", -7°36'47"
- 5) 50°9'13", -7°50'55"
- 6) 50°6'12", -8°1'35"
- 7) 50°6'26", -8°3'10"
- 8) 50°8'14", -8°4'23"
- 9) 50°15'13", -7°57'34"
- 10) 50°16'12", -7°50'29"
- 11) 50°23'36", -7°34'45"
- 12) 50°23'31", -7°31'50"

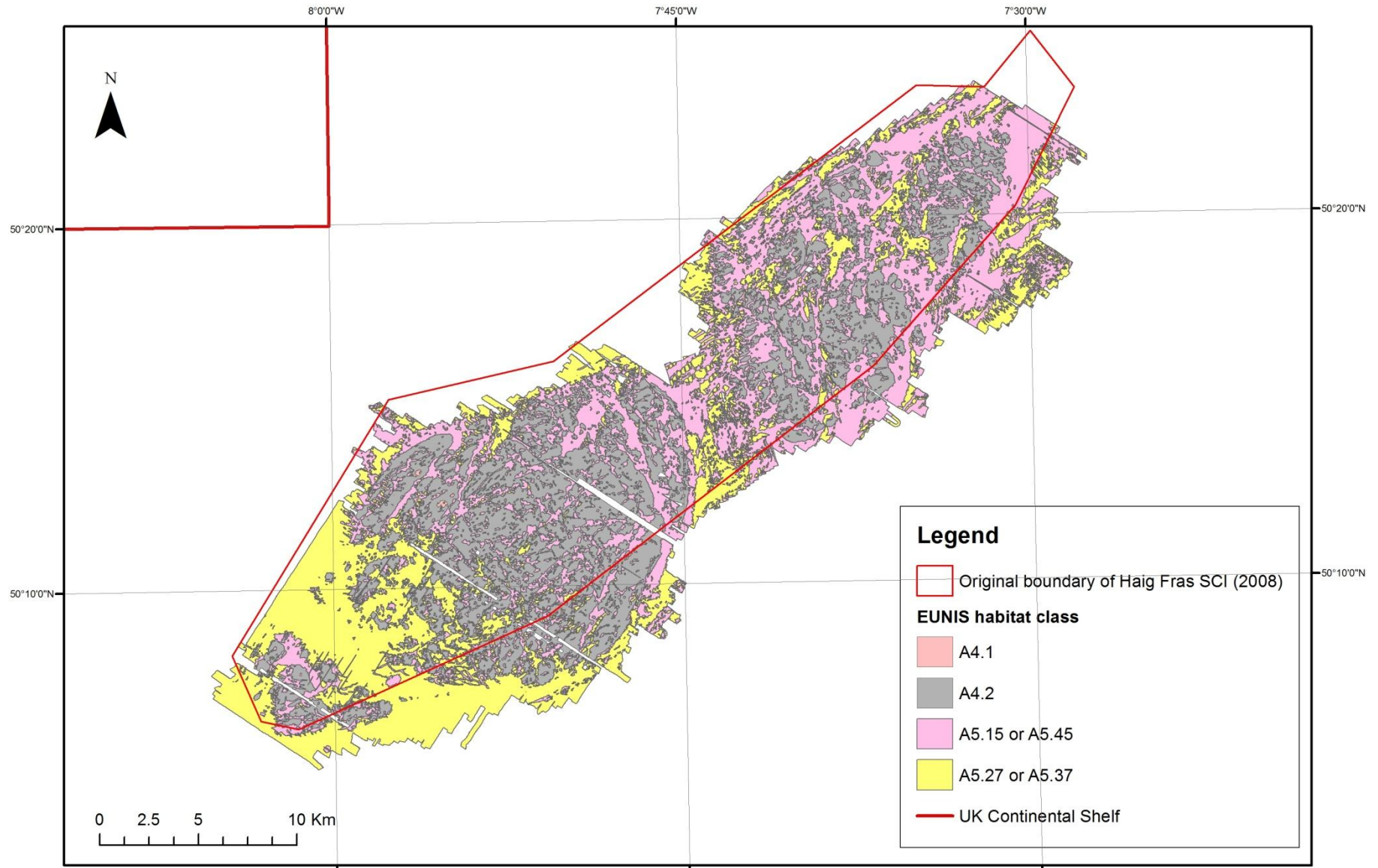
Site map projected in UTM (Zone 29N, WGS84 datum). Seabed habitat derived from BGS 1:250,000 seabed sediment maps © NERC and SeaZone bathymetry.

Bathymetry © British Crown and SeaZone Solutions Limited. All rights reserved. Products Licence No. PGA042006.003. This product has been derived in part from material obtained from the UK Hydrographic Office with the permission of the Controller of Her Majesty's Stationery Office and UK Hydrographic Office (www.ukho.gov.uk).

NOT TO BE USED FOR NAVIGATION. The exact limits of the UK Continental Shelf are set out in orders made under section 1(7) of the Continental Shelf Act 1964 (© Crown Copyright). Map copyright JNCC 2008.

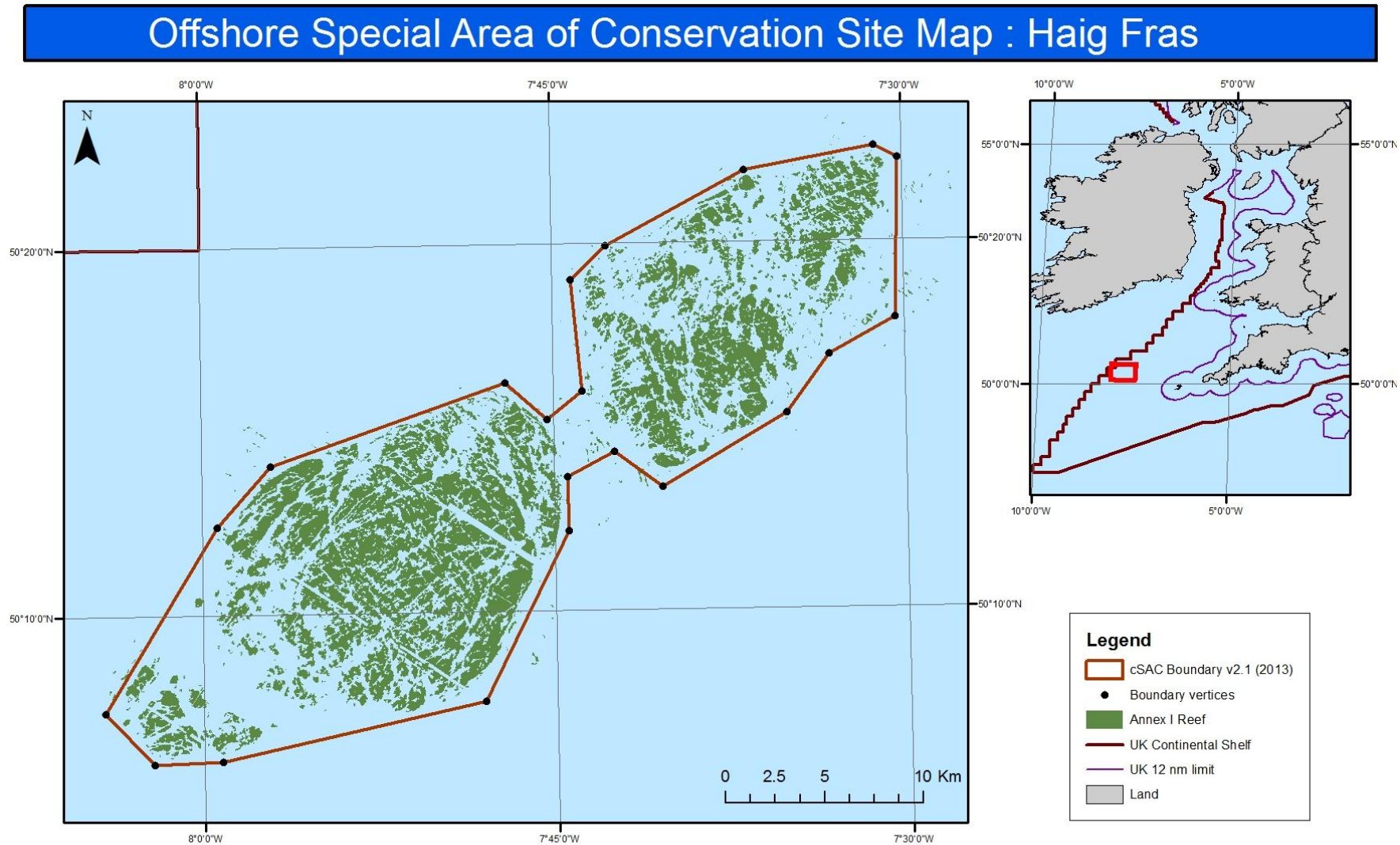
Map version number 1.5 (23/05/08)

Figure 2: Revised habitat map from recent surveys of Haig Fras.



Site map projected in UTM (Zone 29N, WGS84 datum). Habitat map from Barrio-Frojan et al (2015). Data copyright JNCC/Cefas. Contains UKHO data © Crown copyright. All rights reserved. The exact limits of the UK Continental shelf are set out in orders made under section 1 (7) of the Continental Shelf Act 1964 and Continental Shelf (Designation of Areas) Order 2013. NOT TO BE USED FOR NAVIGATION. Map Copyright JNCC 2015

Figure 3: Amended boundary of Haig Fras cSAC/SCI (July 2015)



World Vector Shoreline © US Defence Mapping Agency. The exact limits of the UK Continental Shelf are set out in orders made under section 1(7) of the Continental Shelf Act 1964 (© Crown Copyright). MAP NOT TO BE USED FOR NAVIGATION. © JNCC 2013. Projection WGS84 UTM 29N. DB 12/12//2013

References

Barrio Froján, C., Diesing, M. and Curtis, M. (2015). Mapping of the Haig Fras Site of Community Importance (SCI). JNCC/Cefas Partnership Report Series No. 4, JNCC Peterborough.

JNCC. 2012. UK Guidance on defining boundaries for marine SACs for Annex I habitat sites fully detached from the coast [online]. Peterborough: JNCC. Available from: http://jncc.defra.gov.uk/pdf/SACHabBoundaryGuidance_2012Update.pdf [Accessed June 2015]