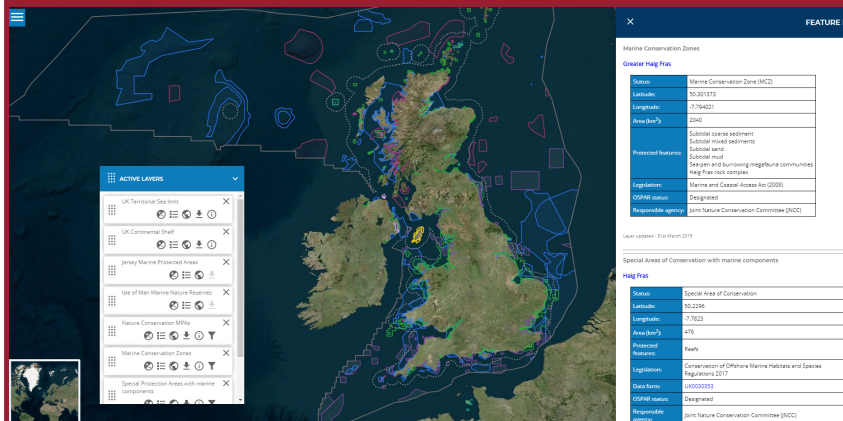


JNCC MPA interactive mapper



In July we released our brand-new interactive Marine Protected Area (MPA) Mapper where you can explore MPAs in UK and Crown Dependency waters <https://jncc.gov.uk/our-work/marine-protected-area-mapper/>

MPAs protect 22% of UK offshore waters, so come and discover the protected habitats, species and geological features that make this network special. Contact the team OffshoreMPAs@jncc.gov.uk or use the Mapper help for guidance <https://jncc.gov.uk/our-work/marine-protected-area-mapper/#using-the-mapper>

Surveying cetaceans



There were lovely calm conditions for JNCC staff who took time away from the office as volunteers on a cetacean survey on board the Aberdeen-Shetland ferry on behalf of ORCA, which is one of a group of organisations collaborating with platforms of opportunity such as this to collect cetacean monitoring data.

These data are part of a growing evidence base used by JNCC and others, to inform cetacean conservation. <https://www.orcaweb.org.uk/>

Latest National Plant Monitoring Scheme data

The National Plant Monitoring Scheme (NPMS) survey data (2015-2018) have been published. This data resource provides plot-level plant occurrence data for the first four years of the Scheme, covering the UK, the Channel Islands, and the Isle of Man. NPMS is a habitat-based plant monitoring scheme designed by the Botanical Society of Britain & Ireland, the Centre for Ecology & Hydrology, Plantlife and JNCC. The aim of the scheme is to collect data to provide an annual indication of changes in plant abundance and diversity. <https://www.npms.org.uk/>

For more than 25 years JNCC has provided robust evidence and trusted advice on nature conservation to enable UK governments to achieve their policy objectives. As a public body we also work in partnership with business and society. Our people are dedicated to providing high-quality evidence and advice on the natural environment for the benefit of current and future generations. Our vision is to be a world-leading provider of innovative solutions, placing nature at the heart of sustainable wealth and wellbeing.

Deepsea Sensitivity Assessments



MarLIN
The Marine Life Information Network
information on the biology of species and the ecology of habitats found around the coasts and seas of the British Isles

[Species](#) [Habitats](#) [Sensitivity](#) [Evidence](#) [Traits](#)

[Home](#)

Leptometra celtica assemblage on Atlantic upper bathyal coarse sediment

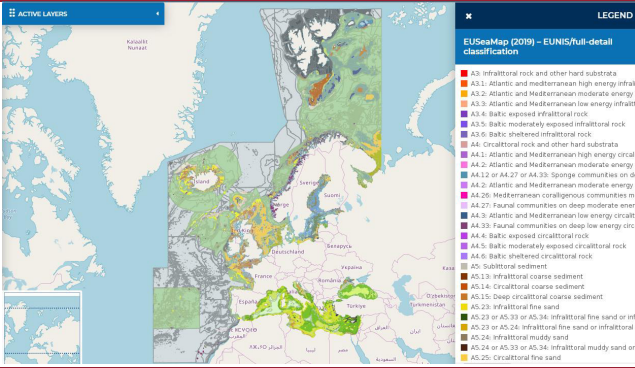


Leptometra celtica assemblage on coarse sediment
Photographer: Anon. Copyright: Defra, JNCC, Marine Institute, BGS, UoP 2007

The first set of JNCC’s deep sea sensitivity assessments have been published and are available on the MarLIN website! These assessments provide information on the resistance, resilience and sensitivity of *Leptometra celtica* assemblages (a feather star) to a range of marine pressures, at depths of 200-1300m in the upper and mid-bathyal zones. The assessments follow the Marine Evidence-based Sensitivity Assessment (MarESA) method and have been peer-reviewed by deep-sea experts. These feather star dominated habitats, which occur on sand and coarse sediment, have been found in The Canyons Marine Conservation Zone, off south-west England. <https://www.marlin.ac.uk/habitats>

EUSeaMap update

A new version of the pan-European broad-scale habitat map (EUSeaMap) has been released. This update includes increased coverage and a higher map resolution and is available to view on an Interactive Map Viewer at <https://www.emodnet-seabedhabitats.eu/access-data/launch-map-viewer>



Commonwealth coral reef protection



As part of The Commonwealth Blue Charter, Commonwealth countries devoted to saving the world’s coral reefs met in Townsville, Australia to outline immediate and long-term actions they can take to ensure the health of coral reef ecosystems. JNCC’s Jane Hawkrigde attended the workshop, hosted by the Australian Institute of Maritime Science, which looked at how countries could make a difference by co-ordinating national, regional and global actions, building on each other’s experiences, and upscaling solutions for in-water action. <https://bluecharter.thecommonwealth.org/action-groups/coral-reef-restoration/>

The Commonwealth Blue Charter is an agreement by all 53 Commonwealth countries to actively co-operate to solve ocean-related problems and meet commitments for sustainable ocean development and has set up nine action groups of which Coral Reef Protection and Restoration is one. <https://bluecharter.thecommonwealth.org/>

Defra ‘Top Team’ award



Alongside colleagues from Defra, Natural England and Cefas, members of the JNCC Marine Ecosystems Team had their efforts recognised by being nominated for and winning the Defra Award for ‘Top Team’. The team worked on providing scientific advice to Defra to support the designation of a third tranche of Marine Conservation Zones designated in May this year. The Defra group awards celebrate individuals and teams across the Defra group over the past year who’ve delivered outstanding results for Defra Group or the public.

Pictured are members of the winning MPA team from Defra, Natural England, JNCC and Cefas at the ceremony which took place at Kings College London.

Connect with us

jncc.gov.uk

facebook.com/JNCCUK

twitter.com/JNCC_UK

linkedin.com/company/jncc

If you have any comments, would like to know more about the work featured in this bulletin or would like to join our mailing list please email communications@jncc.gov.uk

Images: Common Blue Damselfly © Maddy Long | JNCC Interactive Mapper © JNCC | View of the River Dee from Inverdee House © Nikki Taylor | Foxgloves © Wendy Dalton | Deepsea Sensitivity Assessments © MarLIN | Attendees at the Commonwealth Blue Charter Coral Reef Protection and Restoration working group meeting © Australian Institute of Marine Science | Defra award winning MPA team © JNCC | EU SeaMap © EMODnet