

Data Transfer from the Natura 2000 database to the Emerald Network database



Emerald Network



- Ecological network made up of Areas of Special Conservation Interest (ASCI)
- Objective: **long term survival of the species and habitats of the Bern Convention requiring specific protection measures**
- For EU Member States implementation is through the Habitats and Birds Directives, so SACs and SPAs are their Emerald Network Sites
- <https://www.coe.int/en/web/bern-convention/emerald-network>

Emerald Network



Data transfer as a result of Brexit

Commitment made at Bern Standing Committee 38 (Nov. 2018)

UK sites which are currently part of the EU's Natura 2000 Network will continue as the UK's contribution to the Emerald network after the UK leaves the EU

UK's Natura 2000 (National Site Network post exit) sites already Emerald sites, but data in Natura 2000 database

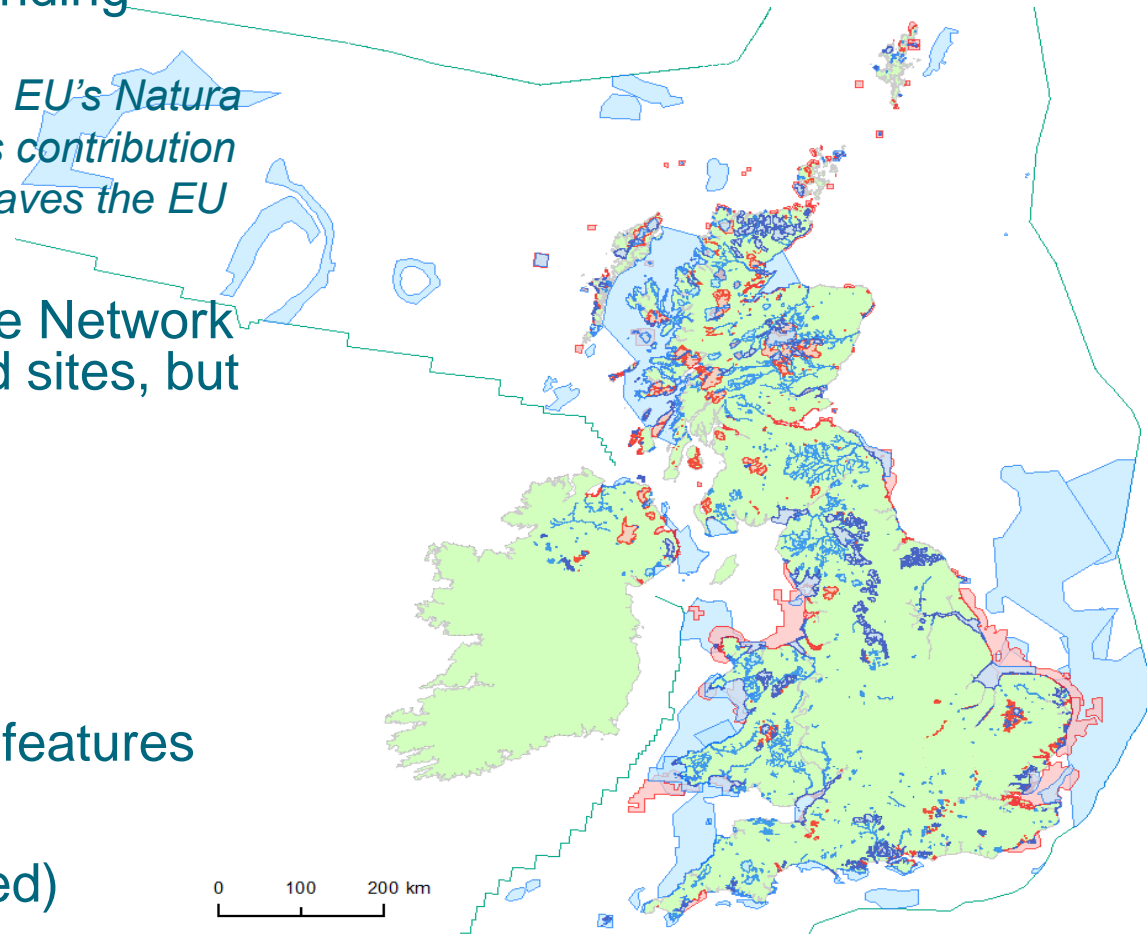
UK data transfer

284 SPAs 657 SACs

361 Species 77 Habitats

Terrestrial, Freshwater, Marine features

Gibraltar (2 sites, double badged)



Translating species data

The data translation exercise was relatively straightforward for species features, as most SPA and SAC features matched the species listed in Resolution 6 of the Bern Convention. However regularly occurring migratory species, and assemblages of birds (which are features in SPAs) are not listed on Resolution 6, but can be included as ASCI features as a result of Recommendation 16 . Accordingly, some species features needed to be moved from section 3.2 (Species listed in Resolution 6 and site evaluation for them) to section 3.3 (Other Important Species of Flora and Fauna) of the Standard Data Form.

Translating habitat data

The Habitats Directive lists habitats for which SACs should be designated on its Annex I. This is an old version of the Palaearctic Habitats classification (which underpins the EUNIS classification). Under the Bern Convention habitats for which ASCIs should be designated are listed in Resolution 4 – which is linked to the European Nature Information System (EUNIS). But Resolution 4 does not include all EUNIS habitats as not all are considered as under threat and therefore needing conservation action.

The relationship between Annex I and Resolution 4 is far from straightforward. JNCC worked with habitat specialists employed by the Statutory Nature Conservation Bodies to identify which Annex I habitats would translate to which EUNIS habitats, and whether the translated habitats are listed on Resolution 4. It quickly became clear that there were a variety of relationships between Annex I habitats and Resolution 4 habitats respectively

Translating habitat data

It also became clear that some translations were to habitats that were listed on Resolution 4, and others to habitats that were part of EUNIS, but not listed on Resolution 4. In addition, it was realised that complex translations could occur when considering the translations on a site-by-site basis – for example a split could lead to a number of habitats, which might include those which were translated from other habitats on the site – thus leading to a split-merge operation.

Considering this from a site perspective nine categories of translation were identified.

In order to track this complexity, and also to note which habitats translated to Resolution 4, site by site notes were created and placed in section 4.2 (Quality and Importance) of the Standard Data Form.

Emerald Network Standard Data Form: <https://rm.coe.int/1680746bfa>

Translating habitat data

In summary:

- Mapping Annex I to Resolution 4 is not always straightforward

- Direct translation: 1:1
 - Merge: n:1
 - Split: 1:n
 - Partial: n:n
 - No Translation
-
- | | | |
|--|--|---------------------|
| | | n all Res 4 |
| | | n Res 4 + non-Res 4 |
| | | n all Res 4 |
| | | n Res 4 + non-Res 4 |
| | | 1:1 non Res 4 |
| | | 1:n non-Res 4 |

- Categories can become complex – e.g. a split which leads to a subsequent merge
- Based on the actual data rather than theoretical combinations, JNCC concluded there were nine categories in the end (see later slides)

Emerald Network Tranche 1

Tranche 1: (“easy stuff”)

- Species features
- Direct translation: 1:1
- Merge: n:1

Note:

- Tranche 1 only included sites where all features on a site could be translated (delivered Nov 2020)

Bern Standing Committee 40

The Standing Committee noted that UK sites included in the Natura 2000 Network are already Emerald Network sites and that will be the case for UK sites which are included in the Natura 2000 Network as at the end of December 2020. The Standing Committee also noted that listing for UK sites takes effect as of 11pm GMT on 31 December 2020. The Standing Committee further welcomed that the UK is continuing its work to share the data for the rest of its sites with the Secretariat of the Bern Convention to enable the information on these sites to be displayed in the Emerald Network Viewer.

Emerald Network Tranches 1 & 2

Tranche 1: (“easy stuff”)

- Species features
- Direct translation: 1:1
- Merge: n:1

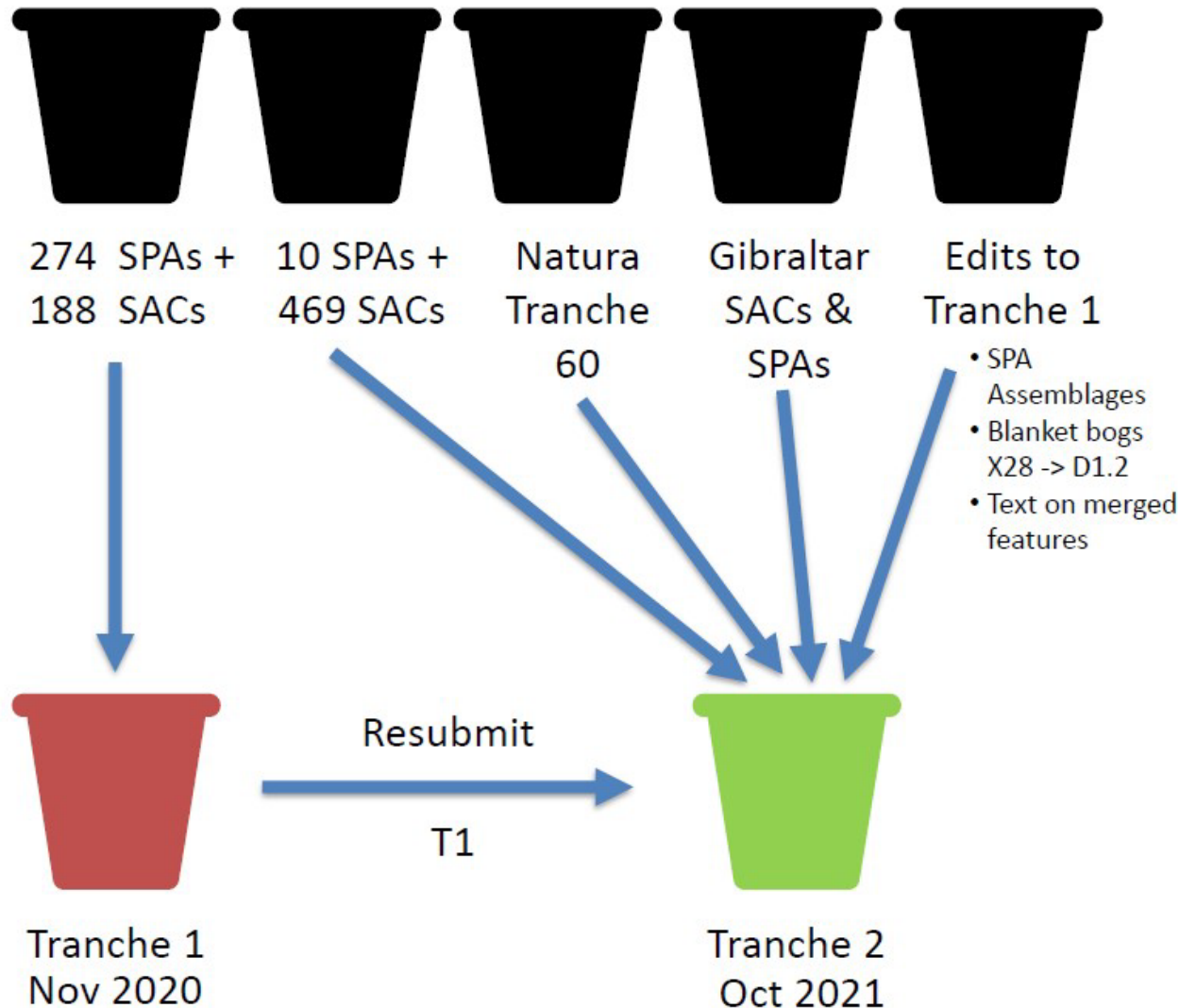
Tranche 2: (“less easy” stuff)

- Split: 1:n
- Partial: n:n
- No Translation
- Combinations

Note:

- Tranche 1 only included sites where all features on a site could be translated (delivered Nov 2020)
- Tranche 2 sites also included habitats and species included in Tranche 1 where they occurred on sites with more complex translations (delivered Oct 2021)

Emerald Network Tranches 1 & 2



Careful consideration needed to handle detail

- Rules for handling Standard Data Form (SDF) section 3.1
(Habitat types present on the site and site evaluation for them)
- Relative Surface Area
- Representativity
- D Features
- Non-translation
- Do not have extent of Resolution 4 habitats in UK
- So cannot recalculate Representativity (or relative surface area) when Annex I habitats split or partially translated -> gaps in section 3.1 of the Standard Data Form

Relationship Categories (1)

Nine different relationship **categories** were identified between the Annex I habitats and resolution 4 habitat translations

category 1: One-to-one, Annex I habitat is equal to Resolution 4 habitat

category 2: Many-to-one, Annex I habitat has a narrower definition than Resolution 4 habitat so that occurrences of Annex I habitat will always equate to a specific Resolution 4 habitat.

category 3: Partial overlap, Annex I habitat definition partially overlaps with Resolution 4 habitat definition so that a correlation only applies under certain circumstances

category 4: One-to-many, Annex I habitat definition is broader than Resolution 4 habitat definition so that a correlation is possible but occurrences of this Annex I habitat will not always equate to a specific Resolution 4 habitat

category 5: No equivalent translation, Annex I habitat does not have an equivalent Resolution 4 habitat

Relationship Categories (2)

Combined relationship categories to handle translations between Annex I habitats within a site

category 6: (combined categories 2 and 3) Many-to-one translation with additional partial translation split

category 7: (combined categories 2 and 4) Combined many-to-one translation and one-to-many translations

category 8: (combined categories 3 and 4) One-to-many translation with additional partial translations

category 9: (combined categories 2, 3 and 4) Combined many-to-one translation and one-to-many translations with additional partial translations

SDF Section 3.1

Rule Set for Categories 1 and 2

- **Priority habitat:** no rule required as priority habitats are not identified in the Bern submission
- **Not Present:** Res4 habitat are Not Present if all of its related Annex I habitats are Not Present
- **Habitat extent:** Sum the Annex I habitats' habitat extent
- **Percentage cover:** Re-calculate the percentage cover for all habitats (summed habitat extent / total site area * 100)
- **Caves:** Sum the Annex I habitats' cave numbers
- **Data quality:** Exclude Annex I habitats where their habitat extent is 10% or less of the summed habitat extent. For remaining habitats calculate data quality scores based on (G + G = G; G + M = M; G + P = M; M + M = M; M + P = M; P + P = P).
- **Habitat representativity:** Remove habitat extent from Annex I habitats with habitat representativity "D", then use the habitat representativity score from the Annex I habitat with the largest habitat extent. If there are two habitats with the largest habitat extent use the highest habitat representativity
- **Relative surface score.** Use the annex I habitat relative surface score for category 1 Annex I habitats with a A|B|C habitat representativity. Exclude Annex I habitats with a habitat representativity D and those with a 2,3,4,5 category
- **Conservation status:** Exclude all Annex I habitats with a habitat representativity D. For habitats with A|B|C habitat representativity use the highest conservation score from the Annex I habitats irrespective of re-calculated percentage cover
- **Global assessment:** Exclude all Annex I habitats with a habitat representativity D. For habitats with A|B|C habitat representativity use the highest global assessment score from the Annex I habitats irrespective of re-calculated percentage cover

SDF Section 3.1

Rule set for categories 3 – 9

- **Priority habitat:** no rule required as priority habitats are not identified in the Bern submission
- **Not present:** Res4 habitats are present if all the Annex I habitats are present else rule not applied
- **Habitat extent:** cannot apply rule. Add res4 habitat extent if supplied by CNCBs
- **Percentage cover:** cannot apply rule unless res4 habitat extent supplied by CNCBs, then re-calculate the percentage cover (CNCB supplied habitat extent / total site area * 100)
- **Caves** Caves number for res4 habitat is zero if cave numbers for all the Annex I habitats are zero else rule is not applied
- **Data quality:** cannot apply rule. Add res4 data quality score if supplied by CNCBs
- **Habitat representativity:** Exclude A|B|C habitat representativity for all categories and D habitat representativity for categories 5,6,7,8,9, transfer over habitat representativity D for categories 3 and 4
- **Relative surface scores:** cannot apply rule
- **Conservation status:** cannot apply rule
- **Global assessment:** cannot apply rule

SDF Section 4.2 text

- Section 4.2 (Quality and Importance) of the Standard Data Form used to document, on a site by site basis, the complexities of the translation.
- Statement built from component boiler plate text, into which the names of the Annex I and Resolution 4 text is substituted, depending on which categories individual features on a site fall into.
- If necessary, the component text (except link text) is repeated to show the relationship of each Annex I feature that is being translated into Resolution 4 – for example, the category 4 text can be repeated if there are two Annex I habitats that are being split for a single site.
- This means for complex sites the text can become very long; for example, UK0012594 Rum has the following categories: [category 1,2,4,5+,7,8-,9+,H2130]
- The slides below show examples of the components for each category, but in most cases there is more text for individual sites than is shown.

Category 1 UK0030218 Airds Moss

Example of a site with direct translation from Annex I habitat to resolution 4 habitat translation, with Annex I habitat H7130 fully translating to resolution 4 habitat D1.2.

This site was originally designated in the United Kingdom of Great Britain and Northern Ireland (UK) for qualifying habitats listed on Annex I of European Council Directive 92/43/EEC on the conservation of natural habitats and of wild fauna and flora, known as the Habitats Directive.

[category 1] The Annex I habitats listed in field 3.1 of the Standard Data Form at this site have been matched with habitats listed on Resolution No. 4 (1996) of the Convention on the Conservation of European Wildlife and Natural Habitats (Bern Convention).

[category 1] The following Annex I habitat(s) were fully translated into a Resolution No. 4 (1996) habitat: **[category 1a]** Annex I habitat 7130 Blanket bogs (* if active bog) translated into Resolution No. 4 (1996) habitat D1.2 Blanket bogs.

Habitat specific text UK0012559 Penhale Dunes

Example of a site that includes Annex I habitat H2130 Fixed coastal dunes with herbaceous vegetation (“grey dunes”) requiring specific text

[category 1] The following Annex I habitat(s) were fully translated into a Resolution No. 4 (1996) habitat: **[category 1a]** Annex I habitat 2120 Shifting dunes along the shoreline with *Ammophila arenaria* (white dunes) translated into Resolution No. 4 (1996) habitat B1.3 Shifting coastal dunes; **[category 1a]** Annex I habitat 2130 Fixed coastal dunes with herbaceous vegetation (grey dunes) translated into Resolution No. 4 (1996) habitat B1.4 Coastal stable dune grassland (grey dunes); **[category 1a]** Annex I habitat 2170 Dunes with *Salix repens* ssp. *argentea* (*Salicion arenariae*) translated into Resolution No. 4 (1996) habitat B1.6 Coastal dune scrub; **[category 1a]** Annex I habitat 2190 Humid dune slacks translated into Resolution No. 4 (1996) habitat B1.8 Moist and wet dune slacks.

[category H2130] The UK interpretation of the translation of Habitats Directive Annex 1 habitat 2130 Fixed coastal dunes with herbaceous vegetation (grey dunes) to the Bern Convention Resolution No. 4 (1996) habitat B1.4 Coastal stable dune grassland (grey dunes) includes types of this habitat in the Atlantic biogeographic region.

Link text

Where a site contains translations beyond category 1, the following link text is used according to the categories present.

[category 2-9] The Annex I habitats listed in field 3.1 of the Standard Data Form at this site have been matched with habitats listed on Resolution No. 4 (1996) of the Convention on the Conservation of European Wildlife and Natural Habitats (Bern Convention), but the correspondence between Annex I habitats and Resolution No. 4(1996) habitats do not always correspond exactly.

[category 3,6,8,9] In some cases, only a partial translation was possible.

[category 3,4,6-9] The UK does not have information on the extent of Resolution No. 4 (1996) habitats either on SACs or more generally. As a result of splitting an Annex I habitat to more than one Resolution No. 4 (1996) habitat it is not possible to recalculate a 'true' Representativity score.

Category 2 UK0016611 Fairy Water Bogs

Example of site with two pairs of Annex I habitats merging into two separate resolution 4 habitats.

[category 2] The following Annex I habitats were merged into a Resolution No. 4 (1996) habitat: **[category2a]** Annex I habitats 7110 Active raised bogs and 7120 Degraded raised bogs still capable of natural regeneration were merged into Resolution No. 4 (1996) habitat X04 Raised bog complexes; **[category 2a]** Annex I habitats 7140 Transition mires and quaking bogs and 7150 Depressions on peat substrates of the Rhynchosporion were merged into Resolution No. 4 (1996) habitat D2.3 Transition mires and quaking bogs.

Category 3 UK0030329 Crowdy Marsh

Example of site with an Annex I habitat partially translating to a resolution 4 habitat and another EUNIS habitat not on the resolution 4 habitat list

[category 3+] The following Annex I habitat(s) were partially translated into Resolution No. 4 (1996) habitat(s): **[category 3a+]** Annex I habitat 7140 Transition mires and quaking bogs was partially translated to Resolution No. 4 (1996) habitat D2.3 Transition mires and quaking bogs. According to UK national experts, a full translation would include translation to EUNIS habitat D2.1 Valley mires which is not listed on Resolution No. 4 (1996). The area of the Annex I habitat 7140 was 32.39 hectares. **[category 3b+]** It was not possible to divide the area of the Annex I habitat(s) between the Resolution No. 4 (1996) habitat(s) to which the Annex I habitat(s) has been translated.

Category 4 UK0012766 Coed y Cerrig

Example of a site where an Annex I habitat translates to a split into two resolution 4 habitats

[category 4] The following Annex I habitat(s) were split into Resolution No. 4 (1996) habitats: **[category4a]** Annex I habitat 91E0 Alluvial forests with *Alnus glutinosa* and *Fraxinus excelsior* (*Alno-Padion*, *Alnionincanae*, *Salicion albae*) was translated to Resolution No. 4 (1996) habitats G1.21 Riverine *Fraxinus* – *Alnus* woodland, wet at high but not at low water and G1.41 *Alnus* Swamp Woods not on acid peat. The area of the Annex I habitat 91E0 was 7.26 hectares. **[category 4b]** It was not possible to divide the area of the Annex I habitat(s) between the Resolution No. 4 (1996) habitats to which the Annex I habitat(s) has been translated.

Category 5 UK0030251 River Dee

Example of a site with more than one Annex I habitat partially translating to separate resolution 4 habitats and other EUNIS habitats not on the resolution 4 habitat list. The site also contains multiple Annex I habitats that translate to EUNIS habitats not on the resolution 4 habitat list

[category 5+] It was not possible to translate the following Annex I habitat(s): **[category 5a+]** Annex I habitat 3260 Water courses of plain to montane levels with the Ranunculus fluitantis and Callitriche-Batrachium vegetation as, according to UK national experts, it matches with EUNIS habitat C2.2 Permanent non-tidal, fast, turbulent watercourses and C2.3 Permanent non-tidal, smooth-flowing watercourses which is not listed on Resolution No. 4 (1996). The UK does not have information for the area of the Annex I habitat, 3260; **[category 5a+]** Annex I habitat 6230 Species-rich Nardus grasslands, on siliceous substrates in mountain areas (and submountain areas, in Continental Europe) as, according to UK national experts, it matches with EUNIS habitat E1.72 Agrostis - Festuca grassland which is not listed on Resolution No. 4 (1996). The area of the Annex I habitat 6230 was 7 hectares.

Category 6 UK0012598 Preseli

Example of a site containing an Annex I habitat, H7140, which partially translates, splitting into a resolution 4 habitat, D2.3 and another EUNIS habitat, D2.1, not on the resolution 4 habitat list. The translation to the resolution 4 habitat D2.3 additionally involves a merge with another Annex I habitat, H7150.

[category 6+] The following Annex I habitats were partially merged into a Resolution No. 4 (1996) habitat, plus, according to UK national experts, to other EUNIS habitat(s) which is not listed on Resolution No. 4(1996). In effect, at least one of the Annex I features is split, and the part of the split is merged with the translation of another Annex I feature: **[category 6a+]** Annex I habitats 7140 Transition mires and quaking bogs and 7150 Depressions on peat substrates of the Rhynchosporion were merged into Resolution No. 4(1996) habitat D2.3 Transition mires and quaking bogs, plus, according to UK national experts, to EUNIS habitat D2.1 Valley mires which is not listed on Resolution No. 4 (1996). **[category 6b+]** This means the relationship between these Annex I and Resolution No. 4 (1996) features is very complex. It was not possible to divide the area of the Annex I habitats between the Resolution No. 4 (1996) EUNIS habitats to which the Annex I habitats have been translated.

Category 6 UK0030358 North Norfolk Sandbanks and Saturn Reef

Example of site containing Annex I habitat H1170 which partially merges with H1110 into resolution 4 habitat A5

[category 6-] The following Annex I habitats were partially merged into a Resolution No. 4 (1996) habitat. In effect, at least one of the Annex I features is split, and the part of the split is merged with the translation of another Annex I feature: **[category 6a-]** Annex I habitats 1110 Sandbanks which are slightly covered by sea water all the time and 1170 Reefs were merged into Resolution No.4 (1996) habitat A5 Sublittoral sediment

[category 6b-] This means the relationship between these Annex I and Resolution No. 4 (1996) features is very complex. It was not possible to divide the area of the Annex I habitats between the Resolution No. 4 (1996) EUNIS habitats to which the Annex I habitats have been translated.

Category 7 UK0012952 Meall na Samhna

Example of a site containing multiple separate split-merge translations. Annex I habitat H6170 splits into two resolution 4 habitats E4.12 and F2.2. The translation to F2.2 additionally involves a merge with another Annex I habitat H4060. Annex I habitat H7240 also splits into two resolution 4 habitats D4.1 and D4.2. The translation to D4.1 additionally involves a merge with another Annex I habitat H7230.

[category 7] The following Annex I habitats have a many to many relationship between Annex I habitats and Resolution No. 4 (1996) habitats. In effect, at least one of the Annex I features is split, and then part of the split is merged with the translation of another Annex I feature:

[category 7a] Annex I habitats 4060 Alpine and Boreal heaths and 6170 Alpine and subalpine calcareous grasslands were translated to Resolution No. 4 (1996) habitats E4.12 Boreo-alpine calcicline snow-patch grassland and herb habitats and F2.2 Evergreen alpine and subalpine heath and scrub; **[category 7a]** Annex I habitats 7230 Alkaline fens and 7240 Alpine pioneer formations of *Caricion bicoloris-atrofuscae* were translated to Resolution No. 4 (1996) habitats D4.1 Rich fens, including eutrophic tall-herb fens and calcareous flushes and soaks and D4.2 Basic mountain flushes and stream sides, with a rich arctic-montane flora. **[category 7b]** This means the relationship between these Annex I and Resolution No. 4 (1996) features is very complex. It was not possible to divide the area of the Annex I habitats between the Resolution No. 4 (1996) EUNIS habitats to which the Annex I habitats have been translated.

Category 7 UK0030069 Sanday

Example of a site containing four Annex I habitats which split and merge to translate into nine resolution 4 habitats

[category 7] The following Annex I habitats have a many to many relationship between Annex I habitats and Resolution No. 4 (1996) habitats. In effect, at least one of the Annex I features is split, and then part of the split is merged with the translation of another Annex I feature: **[category 7a]** Annex I habitats 1110 Sandbanks which are slightly covered by sea water all the time, 1140 Mudflats and sandflats not covered by seawater at low tide, 1160 Large shallow inlets and bays and 1170 Reefs were translated to Resolution No. 4 (1996) habitats A1.11 Mussel and/or barnacle communities, A1.22 Mussels and fucoids on moderately exposed shores, A2.2 Littoral sand and muddy sand, A2.3 Littoral mud, A2.4 Littoral mixed sediments, A2.5 Coastal saltmarshes and saline reedbeds, A3 Infralittoral rock and other hard substrata, A4 Circalittoral rock and other hard substrata and A5 Sublittoral sediment. **[category 7b]** This means the relationship between these Annex I and Resolution No. 4 (1996) features is very complex. It was not possible to divide the area of the Annex I habitats between the Resolution No. 4 (1996) EUNIS habitats to which the Annex I habitats have been translated.

Category 8 UK0016606 Garron Plateau

Example of a site where an Annex I habitat, H3130, partially translates by splitting into resolution 4 habitats and also other EUNIS habitats not on the resolution 4 habitat list.

[category 8+] The following Annex I habitat(s) were split into the following Resolution No. 4 (1996) habitats, plus, according to UK national experts, to other EUNIS habitat(s) which is not listed on Resolution No. 4 (1996): **[category 8a+]** Annex I habitat 3130 Oligotrophic to mesotrophic standing waters with vegetation of the Littorelletea uniflorae and/or of the Isoëto-Nanojuncetea was split into Resolution No. 4 (1996) habitats C1.1 Permanent oligotrophic lakes, ponds and pools and C3.4 Species-poor beds of low-growing water-fringing or amphibious vegetation, plus, according to UK national experts, to EUNIS habitat(s) C1.2 Permanent mesotrophic lakes, ponds and pools which is not listed on Resolution No. 4 (1996). **[category 8b+]** This means the relationship between these Annex I and Resolution No. 4 (1996) features is very complex. It was not possible to divide the area of the Annex I habitats between the Resolution No. 4 (1996) EUNIS habitats to which the Annex I habitats have been translated.

Category 9 UK0012870 Rannoch Moor

Example of a site containing two Annex I habitats with splitting and merging to resolution 4 habitats including non resolution 4 habitat. Annex I habitat H3140 splits into two resolution 4 habitats C1.1 and C1.25. The translation to resolution 4 habitat C1.1 additionally involves a merge between two Annex I habitats H3140 and H3130. H3130 also partially translates to a EUNIS habitat C1.2 which is not on the resolution 4 list

[category 9a+] The following Annex I habitats have a many to many relationship between Annex I habitats and Resolution No. 4 (1996) habitats, plus, according to UK national experts, to other EUNIS habitat(s) which is not listed on Resolution No. 4 (1996). In effect, at least one of the Annex I features is split, and then part of the split is merged with the translation of another Annex I feature: **[category 9a+]** Annex I habitats 3130 Oligotrophic to mesotrophic standing waters with vegetation of the Littorelletea uniflorae and/or of the Isoëto-Nanojuncetea and 3140 Hard oligo-mesotrophic waters with benthic vegetation of Chara spp. were translated to Resolution No. 4 (1996) habitats C1.1 Permanent oligotrophic lakes, pools and C1.25 Charophyte submerged carpets in mesotrophic waterbodies, plus, according to UK national experts, to EUNIS habitat(s) C1.2 Permanent mesotrophic lakes, ponds and pools which is not listed on Resolution No. 4 (1996). **[category 9b+]** This means the relationship between these Annex I and Resolution No. 4 (1996) features is very complex. It was not possible to divide the area of the Annex I habitats between the Resolution No. 4 (1996) EUNIS habitats to which the Annex I habitats have been translated.

Project progress (1)

- Bern Standing Committee 38 (Dec 2018) – UK makes commitment to transfer data as a result of Brexit
- Funds provided to JNCC by Defra
- Discussions with ETC/BD and Bern Convention Secretariat about habitat translations, site overlaps and amending Resolution 4
- Mapping of Natura and Emerald Standard Data forms / databases – identification of fields that would change
- Proposal to amend Resolution 4 with 2 deep sea habitats that would not otherwise be translatable taken through Group of Experts on Protected Areas and Ecological Networks (Oct 2019) and Standing Committee 39 (Nov 2019)
- Delay to delivery because of delay to Brexit

Project progress (2)

- Workshops with all SNCBs about hard to translate features (June 2020)
- Decided not to seek more changes to Resolution 4, as changes made into a 2 year process at Standing Committee 39 (Dec 2019), and potential for wholesale revision as a result of ETC/BD work on a revision of EUNIS
- But need for text in SDF section 4.2 to explain why not full translation
- Regularly Occurring Migratory Species and Assemblages need special treatment (move to SDF field 3.3), as not listed on Resolution 6
- QA with SNCBs
- Tranche 1 delivered to Bern Convention Secretariat in November 2020 in advance of Standing Committee 40

Project progress (3)

- Considerable iteration as complexity of the harder translations was investigated
- Tranche 2 considers habitat relationship on a site by site basis
- Review of all data provided by SNCBs
- Two stage checking with SNCBs
 - of the translations expected for features
 - of the translation site by site
- Data for Gibraltar sites included in Tranche 2 – iteration with Government of Gibraltar on their data
- Tranche 2 resubmits all Tranche 1 sites, and changes some of the translations for Tranche 1 sites as done on a site by site basis not by habitat across all sites
- Tranche 2 delivered to Bern Convention Secretariat in October 2021 in advance of Standing Committee 41

Emerald Network Links



- Emerald Viewer <http://emerald.eea.europa.eu/>
- Emerald Reference Portal <https://www.coe.int/en/web/bern-convention/emerald-network-reference-portal>
- Reference documents <https://www.coe.int/en/web/bern-convention/documents1>
- [Resolution No. 4 \(1996\)](#) listing endangered natural habitats requiring specific conservation measures (including revised Annex I to Resolution No. 4 (1996), adopted in 2014 by the Standing Committee)
- [Resolution No. 5 \(1998\)](#) concerning the rules for the Network of Areas of Special Conservation Interest (Emerald Network)
- [Resolution No. 6 \(1998\)](#) listing the species requiring specific habitat conservation measures (including revised Annex I to Resolution No. 6 (1998), adopted in 2011 by the Standing Committee)
- [Resolution No. 8 \(2012\)](#) on the national designation of adopted Emerald sites and the implementation of management, monitoring and reporting measures