



Department  
for Environment  
Food & Rural Affairs

# The Earth Observation Data Service

Portal and API access



# EODS – Landing Page

- The Service can be reached at <https://earthobs.defra.gov.uk/>
- Select Active Directory if you are using a Defra network device (Defra, Environment Agency, RPA, Natural England, APHA or MMO.) Your log in credentials will match your windows details.
- If you are not on the Defra network (Cefas, JNCC, etc.) and require a Standard account creating, please e-mail [GI-Office@defra.gov.uk](mailto:GI-Office@defra.gov.uk) or follow [this link](#).
- Once an account has been set up for you, click the ‘Standard’ tab and input your credentials provided to you via e-mail.

# EODS – Landing Page Preview

## Welcome to the Defra Earth Observation Data Service

The Earth Observation Data Service aims to facilitate efficient use of earth observation data across the Defra network by providing analysis-ready Sentinel 1 and 2 data and derived products. This website enables users to explore, visualise and download data. It also provides information on accessing and using the data via web services.

To log in:

- Select the Active Directory tab if you are a member of staff at Defra, Environment Agency, RPA, Natural England, APHA or MMO. You can then log in with the username and password you use to log in to your PC or laptop at work.
- Select the Standard tab if you are a member of any other organisation, or if you have data upload rights.

If you are a partner or a Defra group contractor, you can [apply for access to](#) the EODS.

### Log in to an existing account

Please sign in with Active Directory Account. Or, sign with your standard credentials below:

[Active Directory](#)

[Standard](#)

### Username

### Password

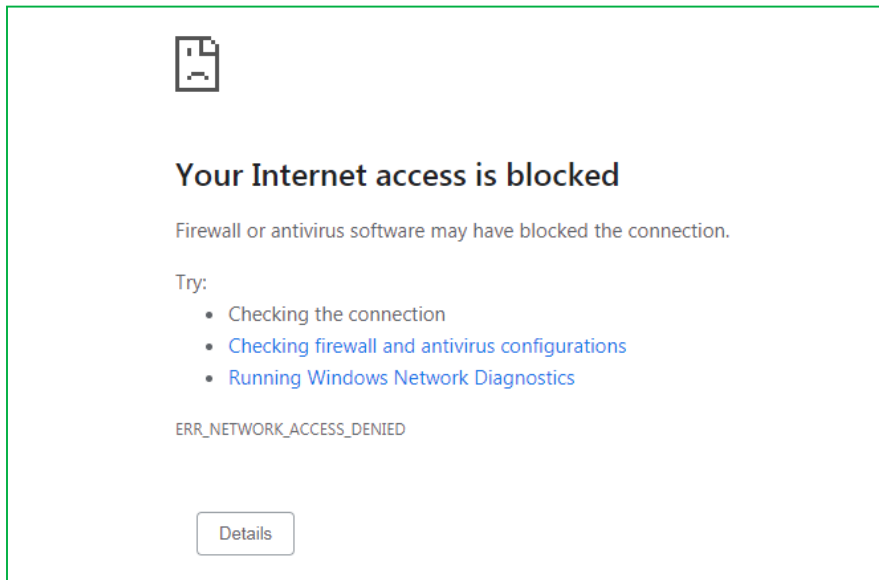
Remember Me

[Forgot Password?](#)

[Log In](#)

# EODS - Whitelisting

- If you are a member of the Defra network, but receive the following page when accessing <https://earthobs.defra.gov.uk/> , please check your VPN connection



- If you are a Standard account user, please contact [GI-Office@defra.gov.uk](mailto:GI-Office@defra.gov.uk) to investigate whether your I.P address needs whitelisting.

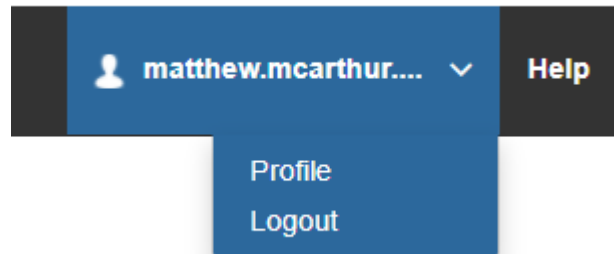
# EODS – Data Catalogue

- Rolling 18 month catalogue of Sentinel 1 and 2 data, this can be accessed by going to the “[Explore Data](#)” button
- After 18 months, this information is backed up to the CEDA archive and removed from EODS
- Data can be put together in a mosaic, time series or downloaded through the portal

The screenshot displays the EODS web portal. At the top left is the logo for the Department for Environment, Food & Rural Affairs. The main title is "Earth Observation Data Service". A dark navigation bar contains links for "Home", "Layers", "Maps", "Layer Groups", and "Admin", along with a user profile for "matthew.mcarthur..." and a "Help" link. Below the navigation bar, the "Explore Layers" section is active, featuring a green "Upload Layers" button. On the left, a "Cart" sidebar contains instructions to "Add resources through the 'Add to cart' buttons" and a "Create Layer Group" button. The main content area shows "11055 Records Found" and a grid of three satellite imagery thumbnails: a grayscale map of the UK, a grayscale map of a coastal region, and a vibrant green satellite image of a field.

# EODS – Authentication Token

- To access the API, you will need to know your Token. This can be found in your profile



matthew.mcarthur.admin



matthew.mcarthur.admin

|                      |               |
|----------------------|---------------|
| Position             | Not provided. |
| Organization         | Not provided. |
| Location             | Not provided. |
| Voice                | Not provided. |
| Fax                  | Not provided. |
| Description          | Not provided. |
| Keywords             | Not provided  |
| Authentication Token | 4T [REDACTED] |

# EODS – Using the API

- For an introduction on how to use the API, you can click on “[Help](#)” at the top of the page or go directly to “[Using the API](#)” from the landing page.
- Here, you will find a Jupyter Notebook with some example scripts as well as a user guide on the structure and parameters of the API
- JNCC have also provided a [Webinar recording](#) demonstrating how to use the API

## Earth Observation Data Service

### [Explore Data](#)

View, filter and download data layers available through the Earth Observation Data Service.

### [Getting Started](#)

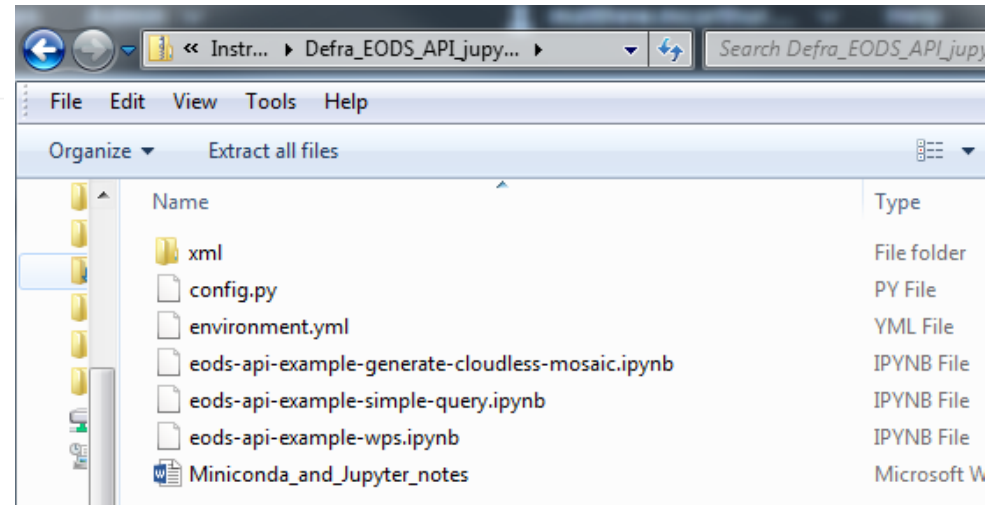
User guide and videos explaining how to use this website to access Earth Observation data.

### [Using the API](#)

Guidance on using the Earth Observation Data Service API to access and use data programmatically.

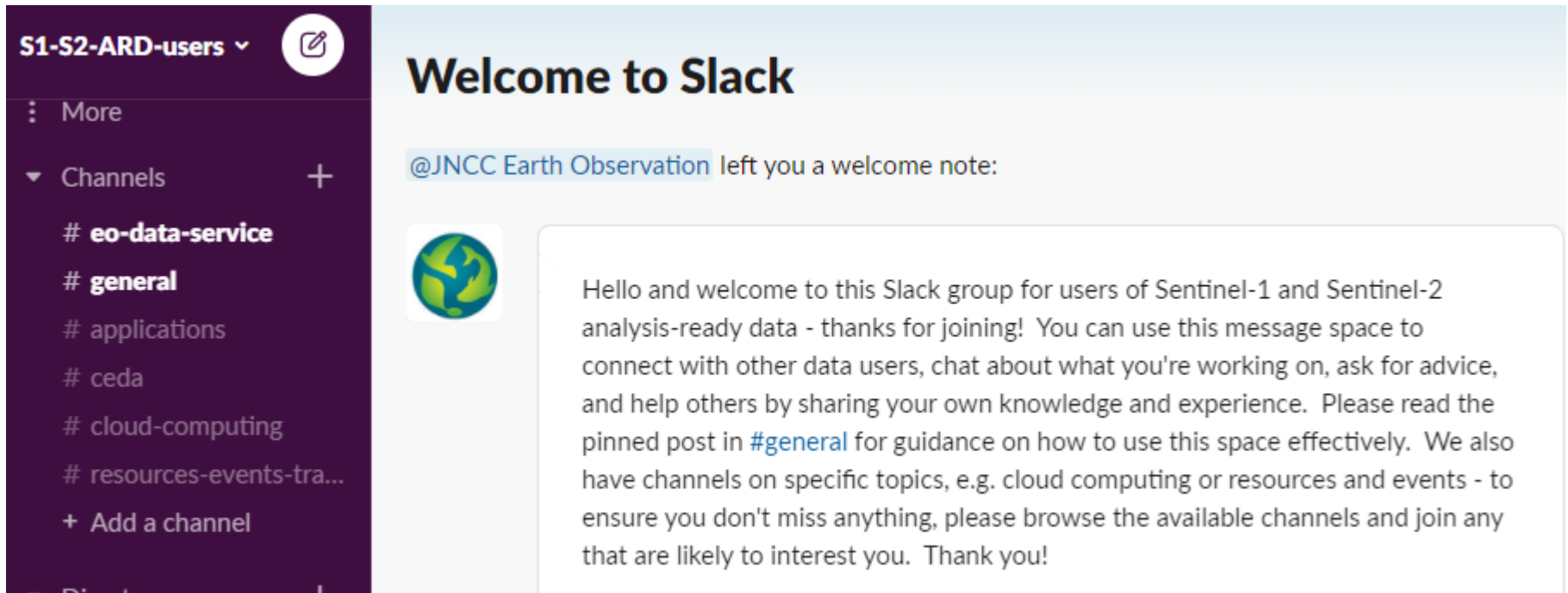
### [Using OGC Links](#)


Guidance on using web services to deliver spatial data to desktop or web-based applications.



# EODS – Forward Look

- Community development of a fluid list of useful repositories <https://github.com/jncc/s1-s2-ard-code-list>
- Building a community to engage and support other users in Slack <https://s1-s2-ard-users.slack.com/>



**S1-S2-ARD-users** 

More

Channels +


- # **eo-data-service**
- # **general**
- # applications
- # ceda
- # cloud-computing
- # resources-events-tra...

+ Add a channel

Direct messages

## Welcome to Slack

@JNCC Earth Observation left you a welcome note:



Hello and welcome to this Slack group for users of Sentinel-1 and Sentinel-2 analysis-ready data - thanks for joining! You can use this message space to connect with other data users, chat about what you're working on, ask for advice, and help others by sharing your own knowledge and experience. Please read the pinned post in [#general](#) for guidance on how to use this space effectively. We also have channels on specific topics, e.g. cloud computing or resources and events - to ensure you don't miss anything, please browse the available channels and join any that are likely to interest you. Thank you!